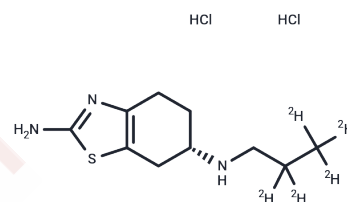


(S)-Pramipexole-(N-Propyl-2,2,3,3,3-D5) Dihydrochloride

Chemical Properties

CAS No. : 1217601-58-5
 Formula: C₁₀H₁₄D₅Cl₂N₃S
 Molecular Weight: 289.28
 Storage: Powder: -20°C for 3 years | In solvent: -80°C for 1 year
Actual storage temperature shall be subject to the COA.



Biological Description

| | |
|---------------|--|
| Description | (S)-Pramipexole-(N-Propyl-2,2,3,3,3-D5) Dihydrochloride is a deuterated compound of (S)-Pramipexole Dihydrochloride (T1476L). (S)-Pramipexole Dihydrochloride has a CAS number of 104632-25-9. Pramipexole dihydrochloride could be used to treat Parkinson disease. |
| Targets(IC50) | Dopamine Receptor |

Preparing Stock Solutions

| | 1mg | 5mg | 10mg |
|-------|-----------|------------|------------|
| 1 mM | 3.4569 mL | 17.2843 mL | 34.5686 mL |
| 5 mM | 0.6914 mL | 3.4569 mL | 6.9137 mL |
| 10 mM | 0.3457 mL | 1.7284 mL | 3.4569 mL |
| 50 mM | 0.0691 mL | 0.3457 mL | 0.6914 mL |

Please select the appropriate solvent to prepare the stock solution, according to the solubility of the product in different solvents. Please use it as soon as possible.

Note: The dilution table applies only to solid products. For liquid products, please calculate the stock solution based on the stated concentration and/or density.

Inhibitor · Natural Compounds · Compound Libraries · Recombinant Proteins

This product is for Research Use Only · Not for Human or Veterinary or Therapeutic Use

Tel:781-999-4286 E_mail:info@targetmol.com Address:34 Washington Street,Wellesley Hills,MA 02481