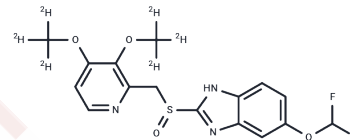


## Pantoprazole-D6

## Chemical Properties

CAS No. : 922727-65-9  
 Formula: C<sub>16</sub>H<sub>9</sub>D<sub>6</sub>F<sub>2</sub>N<sub>3</sub>O<sub>4</sub>S  
 Molecular Weight: 389.41  
 Storage: Powder: -20°C for 3 years | In solvent: -80°C for 1 year  
 Actual storage temperature shall be subject to the COA.



## Biological Description

Description	Pantoprazole-D6 is a deuterated compound of Pantoprazole. Pantoprazole (T6928) has a CAS number of 102625-70-7. Pantoprazole (T6928) is a proton pump inhibitor used for short-term treatment of erosion and ulceration of the esophagus caused by gastroesophageal reflux disease.
Targets(IC50)	Apoptosis,Proton pump,Autophagy

## Preparing Stock Solutions

	1mg	5mg	10mg
1 mM	2.568 mL	12.8399 mL	25.6799 mL
5 mM	0.5136 mL	2.568 mL	5.136 mL
10 mM	0.2568 mL	1.284 mL	2.568 mL
50 mM	0.0514 mL	0.2568 mL	0.5136 mL

Please select the appropriate solvent to prepare the stock solution, according to the solubility of the product in different solvents. Please use it as soon as possible.

Note: The dilution table applies only to solid products. For liquid products, please calculate the stock solution based on the stated concentration and/or density.

Inhibitor · Natural Compounds · Compound Libraries · Recombinant Proteins

This product is for Research Use Only · Not for Human or Veterinary or Therapeutic Use

Tel:781-999-4286 E\_mail:info@targetmol.com Address:34 Washington Street,Wellesley Hills,MA 02481