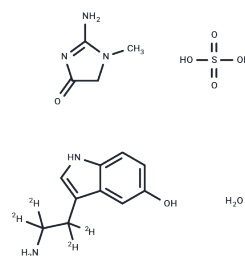


$\alpha,\alpha,\beta,\beta$ -D4-Serotonin-Creatinine Sulfate Complex H₂O

Chemical Properties

CAS No. :	2687960-56-9
Formula:	C ₁₄ H ₁₉ D ₄ N ₅ O ₇ S
Molecular Weight:	409.45
Storage:	Powder: -20°C for 3 years In solvent: -80°C for 1 year Actual storage temperature shall be subject to the COA.



Biological Description

Description	$\alpha,\alpha,\beta,\beta$ -D4-Serotonin-Creatinine Sulfate Complex H ₂ O is a deuterated compound of $\alpha,\alpha,\beta,\beta$ -Serotonin-Creatinine Sulfate Complex H ₂ O.
Targets(IC50)	Endogenous Metabolite

Preparing Stock Solutions

	1mg	5mg	10mg
1 mM	2.4423 mL	12.2115 mL	24.423 mL
5 mM	0.4885 mL	2.4423 mL	4.8846 mL
10 mM	0.2442 mL	1.2212 mL	2.4423 mL
50 mM	0.0488 mL	0.2442 mL	0.4885 mL

Please select the appropriate solvent to prepare the stock solution, according to the solubility of the product in different solvents. Please use it as soon as possible.

Note: The dilution table applies only to solid products. For liquid products, please calculate the stock solution based on the stated concentration and/or density.

Inhibitor · Natural Compounds · Compound Libraries · Recombinant Proteins

This product is for Research Use Only · Not for Human or Veterinary or Therapeutic Use

Tel: 781-999-4286 E_mail: info@targetmol.com Address: 34 Washington Street, Wellesley Hills, MA 02481