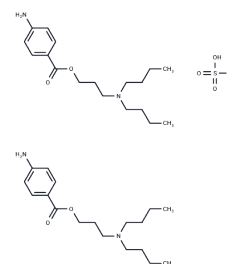


Butacaine sulfate

Chemical Properties

CAS No. : 149-15-5
 Formula: C₁₈H₃₀N₂O₂·1/2H₂O₄S
 Molecular Weight: 355.48
 Storage: Powder: -20°C for 3 years | In solvent: -80°C for 1 year
 Actual storage temperature shall be subject to the COA.



Biological Description

Description	Butacaine sulfate is applied to mucous membranes as a local anesthetic.
Targets(IC50)	Others

Preparing Stock Solutions

	1mg	5mg	10mg
1 mM	2.8131 mL	14.0655 mL	28.131 mL
5 mM	0.5626 mL	2.8131 mL	5.6262 mL
10 mM	0.2813 mL	1.4065 mL	2.8131 mL
50 mM	0.0563 mL	0.2813 mL	0.5626 mL

Please select the appropriate solvent to prepare the stock solution, according to the solubility of the product in different solvents. Please use it as soon as possible.

Note: The dilution table applies only to solid products. For liquid products, please calculate the stock solution based on the stated concentration and/or density.

Reference

- Shimomura T, Irie K, Fujiyoshi Y. Molecular determinants of prokaryotic voltage-gated sodium channels for recognition of local anesthetics. FEBS J. 2016 Aug;283(15):2881-95. doi: 10.1111/febs.13776. Epub 2016 Jul 14. PubMed PMID: 27273848.
- Avdeef A, Kansy M, Bendels S, Tsinman K. Absorption-excipient-pH classification gradient maps: sparingly soluble drugs and the pH partition hypothesis. Eur J Pharm Sci. 2008 Jan;33(1):29-41. Epub 2007 Oct 2. PubMed PMID: 17983735.
- Avdeef A, Bendels S, Tsinman O, Tsinman K, Kansy M. Solubility-excipient classification gradient maps. Pharm Res. 2007 Mar;24(3):530-45. PubMed PMID: 17245653.
- Bendels S, Tsinman O, Wagner B, Lipp D, Parrilla I, Kansy M, Avdeef A. PAMPA - excipient classification gradient map. Pharm Res. 2006 Nov;23(11):2525-35. Epub 2006 Oct 20. PubMed PMID: 17053953.

Inhibitor · Natural Compounds · Compound Libraries · Recombinant Proteins

This product is for Research Use Only · Not for Human or Veterinary or Therapeutic Use

Tel:781-999-4286 E_mail:info@targetmol.com Address:34 Washington Street,Wellesley Hills,MA 02481