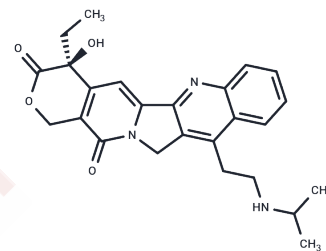


## Belotecan

## Chemical Properties

CAS No. :	256411-32-2
Formula:	C <sub>25</sub> H <sub>27</sub> N <sub>3</sub> O <sub>4</sub>
Molecular Weight:	433.5
Storage:	Powder: -20°C for 3 years   In solvent: -80°C for 1 year Actual storage temperature shall be subject to the COA.



## Biological Description

Description	Belotecan (CKD-602 free base) is a camptothecin derivative and DNA topoisomerase I inhibitor that blocks the cell cycle, induces apoptosis, and has antitumor properties, making it useful for cancer research.
Targets(IC50)	Apoptosis,Others,Topoisomerase

## Preparing Stock Solutions

	1mg	5mg	10mg
1 mM	2.3068 mL	11.534 mL	23.0681 mL
5 mM	0.4614 mL	2.3068 mL	4.6136 mL
10 mM	0.2307 mL	1.1534 mL	2.3068 mL
50 mM	0.0461 mL	0.2307 mL	0.4614 mL

Please select the appropriate solvent to prepare the stock solution, according to the solubility of the product in different solvents. Please use it as soon as possible.

Note: The dilution table applies only to solid products. For liquid products, please calculate the stock solution based on the stated concentration and/or density.

**Inhibitor · Natural Compounds · Compound Libraries · Recombinant Proteins**

This product is for Research Use Only· Not for Human or Veterinary or Therapeutic Use

Tel:781-999-4286 E\_mail:info@targetmol.com Address:34 Washington Street,Wellesley Hills,MA 02481