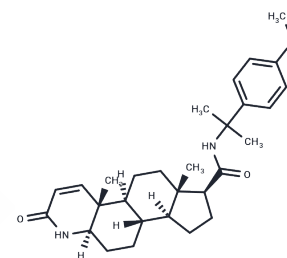


## Lapisteride

## Chemical Properties

|                   |   |
|-------------------|---|
| CAS No. :         | 142139-60-4   |
| Formula:          | C <sub>29</sub> H <sub>40</sub> N <sub>2</sub> O <sub>3</sub>   |
| Molecular Weight: | 464.64  |
| Storage:          | Powder: -20°C for 3 years   In solvent: -80°C for 1 year<br>Actual storage temperature shall be subject to the COA. |



## Biological Description

|               |   |
|---------------|---|
| Description   | Lapisteride (CS-891) a steroidal 5 $\alpha$ -reductase inhibitor is used to treat benign prostatic hyperplasia (BPH) and androgenetic alopecia and may be effective in preventing or treating AGA . |
| Targets(IC50) | Others,Reductase  |

## Solubility Information

|            |  |
|------------|--|
| Solubility | DMSO: 50 mg/mL (107.61 mM),Sonication is recommended.<br>(< 1 mg/ml refers to the product slightly soluble or insoluble) |
|------------|--|

## Preparing Stock Solutions

|       | 1mg       | 5mg       | 10mg      |
|-------|-----------|-----------|-----------|
| 1 mM  | 2.1522 mL | 10.761 mL | 21.522 mL |
| 5 mM  | 0.4304 mL | 2.1522 mL | 4.3044 mL |
| 10 mM | 0.2152 mL | 1.0761 mL | 2.1522 mL |
| 50 mM | 0.043 mL  | 0.2152 mL | 0.4304 mL |

Please select the appropriate solvent to prepare the stock solution, according to the solubility of the product in different solvents. Please use it as soon as possible.

Note: The dilution table applies only to solid products. For liquid products, please calculate the stock solution based on the stated concentration and/or density.

## Reference

Niiyama S, et al. The novel drug CS-891 inhibits 5 $\alpha$ -reductase activity in freshly isolated dermal papilla of human hair follicles. Eur J Dermatol. 2000;10(8):593-595.

Yada S, et al. Solid phase transition of CS-891 enantiotropes during grinding. Int J Pharm. 2003;255(1-2):69-79.

**Inhibitor · Natural Compounds · Compound Libraries · Recombinant Proteins**

This product is for Research Use Only · Not for Human or Veterinary or Therapeutic Use

Tel:781-999-4286 E\_mail:info@targetmol.com Address:34 Washington Street,Wellesley Hills,MA 02481