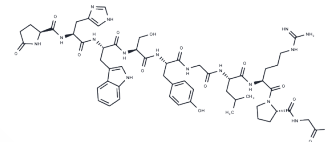


Gonadorelin HCl

Chemical Properties

CAS No. : 51952-41-1
 Formula: C₅₅H₇₆ClN₁₇O₁₃
 Molecular Weight: 1218.77
 Storage: Powder: -20°C for 3 years | In solvent: -80°C for 1 year
Actual storage temperature shall be subject to the COA.



Biological Description

Description	Gonadorelin HCl, as a decapeptide, can stimulate the synthesis and secretion of both pituitary gonadotropins, LUTEINIZING HORMONE, and FOLLICLE STIMULATING HORMONE.
Targets(IC50)	Others

Preparing Stock Solutions

	1mg	5mg	10mg
1 mM	0.8205 mL	4.1025 mL	8.205 mL
5 mM	0.1641 mL	0.8205 mL	1.641 mL
10 mM	0.082 mL	0.4102 mL	0.8205 mL
50 mM	0.0164 mL	0.082 mL	0.1641 mL

Please select the appropriate solvent to prepare the stock solution, according to the solubility of the product in different solvents. Please use it as soon as possible.

Note: The dilution table applies only to solid products. For liquid products, please calculate the stock solution based on the stated concentration and/or density.

Reference

Li CX, Tang ST, Zhang Q. Changes in Bone Mineral Density and Metabolic Parameters after Pulsatile Gonadorelin Treatment in Young Men with Hypogonadotropic Hypogonadism. *Int J Endocrinol.* 2015;2015:324524. doi: 10.1155/2015/324524. Epub 2015 Aug 31. PubMed PMID: 26417369; PubMed Central PMCID: PMC4568382.

Akın O, Yavuz ST, Hacıhamdioğlu B, Sarı E, Gürsel O, Yeşilkaya E. Anaphylaxis to gonadorelin acetate in a girl with central precocious puberty. *J Pediatr Endocrinol Metab.* 2015 Nov 1;28(11-12):1387-9. doi: 10.1515/jpem-2015-0183. PubMed PMID: 26197466.

Poock SE, Lamberson WR, Lucy MC. Effect of different gonadorelin (GnRH) products used for the first or resynchronized timed artificial insemination on pregnancy rates in postpartum dairy cows. *Theriogenology.* 2015 Sep 1;84(4):504-8. doi: 10.1016/j.theriogenology.2015.04.002. Epub 2015 Apr 14. PubMed PMID: 25979657.

Picard-Hagen N, Lhermie G, Florentin S, Merle D, Frein P, Gayrard V. Effect of gonadorelin, lecirelin, and busserelin on LH surge, ovulation, and progesterone in cattle. *Theriogenology.* 2015 Jul 15;84(2):177-83. doi: 10.1016/j.theriogenology.2015.03.004. Epub 2015 Mar 14. PubMed PMID: 25890780.

Inhibitor · Natural Compounds · Compound Libraries · Recombinant Proteins

This product is for Research Use Only · Not for Human or Veterinary or Therapeutic Use

Tel:781-999-4286 E_mail:info@targetmol.com Address:34 Washington Street,Wellesley Hills,MA 02481