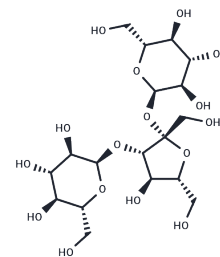


D-(+)-Melezitose

Chemical Properties

CAS No. :	597-12-6
Formula:	C ₁₈ H ₃₂ O ₁₆
Molecular Weight:	504.44
Storage:	Powder: -20°C for 3 years In solvent: -80°C for 1 year <i>Actual storage temperature shall be subject to the COA.</i>



Biological Description

Description	D-(+)-Melezitose is a non-reducing trisaccharide used for identifying indole-positive and indole-negative clinical isolates of <i>Klebsiella</i> spp. It exhibits inhibitory activity against sucrose phosphatase.
Targets(IC50)	Antibacterial
In vitro	By using a straightforward set of biochemical tests along with three additional tests (growth at 10°C, histamine production, and assimilation of D-(+)-Melezitose), most <i>Klebsiella</i> isolates can be accurately classified into specific species. <i>rpoB</i> gene sequence analysis confirmed the biochemical identification results and revealed the presence of <i>Klebsiella</i> variants. This study emphasizes the importance of rapid <i>Klebsiella</i> species identification in clinical microbiology labs to better understand their epidemiology and pathogenic differences in <i>Parazacco spilurus</i> subsp. <i>spilurus</i> [1].

Solubility Information

Solubility	H ₂ O: 80 mg/mL (158.59 mM), Sonication is recommended. DMSO: 80 mg/mL (158.59 mM), Sonication is recommended. (< 1 mg/ml refers to the product slightly soluble or insoluble)
In vivo Formulation	10% DMSO+40% PEG300+5% Tween-80+45% Saline: 3.3 mg/mL (6.54 mM), Sonication is recommended. <i>Please add the solvents sequentially, clarifying the solution as much as possible before adding the next one. Dissolve by heating and/or sonication if necessary. Working solution is recommended to be prepared and used immediately. The formulation provided above is for reference purposes only. In vivo formulations may vary and should be modified based on specific experimental conditions.</i>

Preparing Stock Solutions

	1mg	5mg	10mg
1 mM	1.9824 mL	9.912 mL	19.824 mL
5 mM	0.3965 mL	1.9824 mL	3.9648 mL
10 mM	0.1982 mL	0.9912 mL	1.9824 mL
50 mM	0.0396 mL	0.1982 mL	0.3965 mL

Please select the appropriate solvent to prepare the stock solution, according to the solubility of the product in different solvents. Please use it as soon as possible.

Note: The dilution table applies only to solid products. For liquid products, please calculate the stock solution based on the stated concentration and/or density.

Reference

Alves MS, et al. Identification of clinical isolates of indole-positive and indole-negative *Klebsiella* spp. *J Clin Microbiol.* 2006 Oct;44(10):3640-6.

Inhibitor · Natural Compounds · Compound Libraries · Recombinant Proteins

This product is for Research Use Only · Not for Human or Veterinary or Therapeutic Use

Tel:781-999-4286 E_mail:info@targetmol.com Address:34 Washington Street,Wellesley Hills,MA 02481