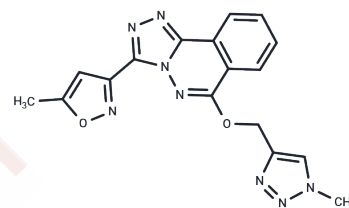


L-822179

## Chemical Properties

CAS No. :	215874-86-5
Formula:	C17H14N8O2
Molecular Weight:	362.35
Storage:	Keep away from direct sunlight Powder: -20°C for 3 years   In solvent: -80°C for 1 year <small>Actual storage temperature shall be subject to the COA.</small>



## Biological Description

Description	L-822179 ( $\alpha 51A$ ) is a selective inverse agonist for the A5 subtype of GABAA receptor with higher intrinsic activity at the A5 subtype than other drugs.
Targets(IC50)	GABA Receptor

## Solubility Information

Solubility	H2O: < 1 mg/mL (insoluble or slightly soluble) DMSO: < 1 mg/mL (insoluble or slightly soluble) (< 1 mg/ml refers to the product slightly soluble or insoluble)
------------	--

## Preparing Stock Solutions

	1mg	5mg	10mg
1 mM	2.7598 mL	13.7988 mL	27.5976 mL
5 mM	0.552 mL	2.7598 mL	5.5195 mL
10 mM	0.276 mL	1.3799 mL	2.7598 mL
50 mM	0.0552 mL	0.276 mL	0.552 mL

Please select the appropriate solvent to prepare the stock solution, according to the solubility of the product in different solvents. Please use it as soon as possible.

Note: The dilution table applies only to solid products. For liquid products, please calculate the stock solution based on the stated concentration and/or density.

### Reference

- Lesaffre E. Noninferiority Clinical Trials: The Good, the Bad, and the Ugly. *Semin Liver Dis.* 2018 May;38(2):97-102. doi: 10.1055/s-0038-1655777. Epub 2018 Jun 5. PubMed PMID: 29871016.
- Zhang S, Huang Q, Wang Q, Wang Q, Cao X, Zhao L, Xu N, Zhuge Z, Mao J, Fu X, Liu R, Wilcox CS, Patzak A, Li L, Lai EY. Enhanced Renal Afferent Arteriolar Reactive Oxygen Species and Contractility to Endothelin-1 Are Associated with Canonical Wnt Signaling in Diabetic Mice. *Kidney Blood Press Res.* 2018 May 30;43(3):860-871. doi: 10.1159/000490334. [Epub ahead of print] PubMed PMID: 29870994.
- Saranya K, Sundaramanickam A, Shekhar S, Meena M, Sathishkumar RS, Balasubramanian T. Biosorption of multi-heavy metals by coral associated phosphate solubilising bacteria *Cronobacter muytjensii* KSCAS2. *J Environ Manage.* 2018 Jun 2;222:396-401. doi: 10.1016/j.jenvman.2018.05.083. [Epub ahead of print] PubMed PMID: 29870968.
- Xu Y, Wu P, Feng P, Guo W, Yang W, Shuai C. Interfacial reinforcement in a poly-L-lactic acid/mesoporous bioactive glass scaffold via polydopamine. *Colloids Surf B Biointerfaces.* 2018 May 29;170:45-53. doi: 10.1016/j.colsurfb.2018.05.065. [Epub ahead of print] PubMed PMID: 29870952.

**Inhibitor · Natural Compounds · Compound Libraries · Recombinant Proteins**

This product is for Research Use Only · Not for Human or Veterinary or Therapeutic Use

Tel:781-999-4286 E\_mail:info@targetmol.com Address:34 Washington Street,Wellesley Hills,MA 02481