

N-CBZ-Phe-Arg-AMC hydrochloride

Chemical Properties

CAS No. : 70382-26-2

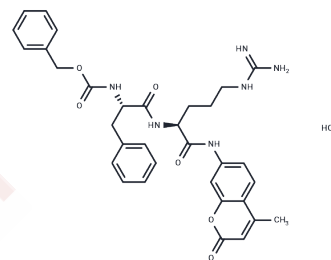
Formula: C₃₃H₃₇ClN₆O₆

Molecular Weight: 649.14

Storage:

Store at low temperature, Keep away from moisture,
Keep away from direct sunlight
Store at -20°C

Actual storage temperature shall be subject to the COA.



Biological Description

Description	N-CBZ-Phe-Arg-AMC hydrochloride (Z-Phe-Arg-Amc HCl) is a substrate for catS protease. CatS protease is an important member of the cysteine protease family and is a lysosomal protease. It is expressed in many inflammatory processes and autoimmune diseases and can be used to assess the activity of lysosomal proteases.
Targets(IC50)	Others

Solubility Information

Solubility	DMSO: 100 mg/mL (154.05 mM) (< 1 mg/ml refers to the product slightly soluble or insoluble)
------------	--

Preparing Stock Solutions

	1mg	5mg	10mg
1 mM	1.5405 mL	7.7025 mL	15.405 mL
5 mM	0.3081 mL	1.5405 mL	3.081 mL
10 mM	0.154 mL	0.7702 mL	1.5405 mL
50 mM	0.0308 mL	0.154 mL	0.3081 mL

Please select the appropriate solvent to prepare the stock solution, according to the solubility of the product in different solvents. Please use it as soon as possible.

Note: The dilution table applies only to solid products. For liquid products, please calculate the stock solution based on the stated concentration and/or density.

Reference

Sage J, et al. Binding of chondroitin 4-sulfate to cathepsin S regulates its enzymatic activity. *Biochemistry*. 2013 Sep 17;52(37):6487-98.

Xu P, et al. Ascorbic acid modulation of iron homeostasis and lysosomal function in trabecular meshwork cells. *J Ocul Pharmacol Ther*. 2014 Mar-Apr;30(2-3):246-53.

Porter K, et al. Lysosomal basification and decreased autophagic flux in oxidatively stressed trabecular meshwork cells: implications for glaucoma pathogenesis. *Autophagy*. 2013 Apr;9(4):581-94. doi: 10.4161/auto.23568. Epub 2013 Jan 29. PMID: 23360789; PMCID: PMC3627672.

Inhibitor · Natural Compounds · Compound Libraries · Recombinant Proteins

This product is for Research Use Only · Not for Human or Veterinary or Therapeutic Use

Tel:781-999-4286 E_mail:info@targetmol.com Address:34 Washington Street,Wellesley Hills,MA 02481