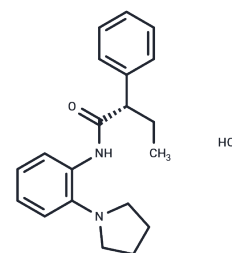


## ML-252 hydrochloride

## Chemical Properties

CAS No. :	2309887-61-2
Formula:	C <sub>20</sub> H <sub>24</sub> N <sub>2</sub> O·HCl
Molecular Weight:	344.9
Storage:	Powder: -20°C for 3 years   In solvent: -80°C for 1 year Actual storage temperature shall be subject to the COA.



## Biological Description

Description	ML-252 is a potent, selective inhibitor of the Kv7.2 voltage-gated potassium channel, demonstrating an IC <sub>50</sub> value of 69 nM in patch clamp assays. It exists as the (S)-enantiomer, which is significantly more effective than both its (R)-enantiomer counterpart and the racemic mixture, with respective IC <sub>50</sub> values of 944 nM and 160 nM. ML-252 exhibits high selectivity for Kv7.2 over other potassium channel subtypes and shows minimal activity against more than 68 G protein-coupled receptors, various transporters, L- and N-type calcium channels, K <sub>ATP</sub> , and hERG potassium channels. However, it does inhibit the melatonin MT1 receptor by 61% at a 10 μM concentration.
Targets(IC <sub>50</sub> )	Others,Cytochromes P450,Potassium Channel

## Preparing Stock Solutions

	1mg	5mg	10mg
1 mM	2.8994 mL	14.497 mL	28.9939 mL
5 mM	0.5799 mL	2.8994 mL	5.7988 mL
10 mM	0.2899 mL	1.4497 mL	2.8994 mL
50 mM	0.058 mL	0.2899 mL	0.5799 mL

Please select the appropriate solvent to prepare the stock solution, according to the solubility of the product in different solvents. Please use it as soon as possible.

Note: The dilution table applies only to solid products. For liquid products, please calculate the stock solution based on the stated concentration and/or density.

Inhibitor · Natural Compounds · Compound Libraries · Recombinant Proteins

This product is for Research Use Only · Not for Human or Veterinary or Therapeutic Use

Tel:781-999-4286 E\_mail:info@targetmol.com Address:34 Washington Street,Wellesley Hills,MA 02481