

## Cholesteryl Palmitoleate

### Chemical Properties

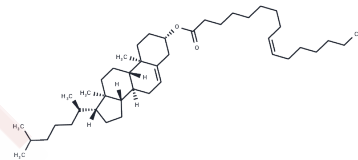
CAS No. : 16711-66-3

Formula: C43H74O2

Molecular Weight: 623.1

Storage: Powder: -20°C for 3 years | In solvent: -80°C for 1 year

Actual storage temperature shall be subject to the COA.



### Biological Description

Description	Cholesteryl palmitoleate, a cholesterol ester, exhibits elevated plasma levels in ApoE-/- mice following exposure to cigarette smoke and in pediatric patients diagnosed with biliary atresia. It serves as a standard for identifying cholesterol esters in human meibomian gland secretions.
Targets(IC50)	Others,Endogenous Metabolite

### Preparing Stock Solutions

	1mg	5mg	10mg
1 mM	1.6049 mL	8.0244 mL	16.0488 mL
5 mM	0.321 mL	1.6049 mL	3.2098 mL
10 mM	0.1605 mL	0.8024 mL	1.6049 mL
50 mM	0.0321 mL	0.1605 mL	0.321 mL

Please select the appropriate solvent to prepare the stock solution, according to the solubility of the product in different solvents. Please use it as soon as possible.

Note: The dilution table applies only to solid products. For liquid products, please calculate the stock solution based on the stated concentration and/or density.

**Inhibitor · Natural Compounds · Compound Libraries · Recombinant Proteins**

This product is for Research Use Only · Not for Human or Veterinary or Therapeutic Use

Tel:781-999-4286

E\_mail:info@targetmol.com

Address:34 Washington Street,Wellesley Hills,MA 02481