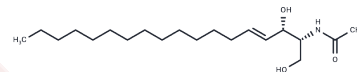


C2 L-erythro Ceramide (d18:1/2:0)

Chemical Properties

CAS No. :	150338-90-2
Formula:	C ₂₀ H ₃₉ NO ₃
Molecular Weight:	341.536
Storage:	Powder: -20°C for 3 years In solvent: -80°C for 1 year Actual storage temperature shall be subject to the COA.



Biological Description

Description	C2 L-erythro Ceramide (d18:1/2:0) is a lipid molecule that can be used in life science related research. The CAS number of C2 L-erythro Ceramide (d18:1/2:0) is 150338-90-2.
Targets(IC50)	Others

Preparing Stock Solutions

	1mg	5mg	10mg
1 mM	2.9279 mL	14.6396 mL	29.2791 mL
5 mM	0.5856 mL	2.9279 mL	5.8558 mL
10 mM	0.2928 mL	1.464 mL	2.9279 mL
50 mM	0.0586 mL	0.2928 mL	0.5856 mL

Please select the appropriate solvent to prepare the stock solution, according to the solubility of the product in different solvents. Please use it as soon as possible.

Note: The dilution table applies only to solid products. For liquid products, please calculate the stock solution based on the stated concentration and/or density.

Inhibitor · Natural Compounds · Compound Libraries · Recombinant Proteins

This product is for Research Use Only · Not for Human or Veterinary or Therapeutic Use

Tel:781-999-4286 E_mail:info@targetmol.com Address:34 Washington Street,Wellesley Hills,MA 02481