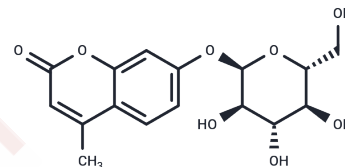


4-Methylumbelliferyl- $\alpha$ -D-Glucopyranoside

## Chemical Properties

CAS No. :	17833-43-1
Formula:	C <sub>16</sub> H <sub>18</sub> O <sub>8</sub>
Molecular Weight:	338.31
Storage:	Powder: -20°C for 3 years   In solvent: -80°C for 1 year Actual storage temperature shall be subject to the COA.



## Biological Description

Description	4-Methylumbelliferyl- $\alpha$ -D-Glucopyranoside (4MU- $\alpha$ Glc) is a pH-dependent $\alpha$ -glucosidase fluorometric substrate, a biomarker for Fabry and Pompe diseases, quantifying $\alpha$ -glucosidase activity in infant blood spots.
Targets(IC50)	glycosidase
In vitro	4-Methylumbelliferyl- $\alpha$ -D-Glucopyranoside can be used as a biomarker for Fabry disease and Pompe disease to quantify alpha-glucosidase activity in blood stain samples from infants. [1]

## Solubility Information

Solubility	DMSO: 15 mg/mL (44.34 mM), Sonication is recommended. (< 1 mg/ml refers to the product slightly soluble or insoluble)
------------	--

## Preparing Stock Solutions

	1mg	5mg	10mg
1 mM	2.9559 mL	14.7793 mL	29.5587 mL
5 mM	0.5912 mL	2.9559 mL	5.9117 mL
10 mM	0.2956 mL	1.4779 mL	2.9559 mL
50 mM	0.0591 mL	0.2956 mL	0.5912 mL

Please select the appropriate solvent to prepare the stock solution, according to the solubility of the product in different solvents. Please use it as soon as possible.

Note: The dilution table applies only to solid products. For liquid products, please calculate the stock solution based on the stated concentration and/or density.

Reference

Olivova P, et al. Effect of sample collection on alpha-galactosidase A enzyme activity measurements in dried blood spots on filter paper. Clin Chim Acta. 2009 May;403(1-2):159-62.

**Inhibitor · Natural Compounds · Compound Libraries · Recombinant Proteins**

This product is for Research Use Only · Not for Human or Veterinary or Therapeutic Use

Tel:781-999-4286 E\_mail:info@targetmol.com Address:34 Washington Street,Wellesley Hills,MA 02481