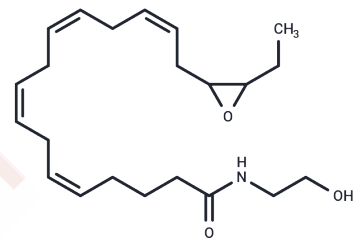


(±)17(18)-EpETE-Ethanolamide

Chemical Properties

CAS No. :	2123491-23-4
Formula:	C22H35NO3
Molecular Weight:	361.52
Storage:	Powder: -20°C for 3 years In solvent: -80°C for 1 year <i>Actual storage temperature shall be subject to the COA.</i>



Biological Description

Description	(±)17(18)-EpETE-Ethanolamide, an ω-3 endocannabinoid epoxide, originates from eicosapentaenoic ethanolamide (EPEA) through cytochrome P450 (CYP) epoxygenases action and is decomposed by soluble epoxide hydrolase (sEH) and fatty acid amide hydrolase (FA, AH). Its endogenous synthesis occurs in LPS-stimulated and EPEA-supplemented BV-2 microglia cells, a process inhibited by the CYP inhibitor ketoconazole. This compound mitigates IL-6 and nitrite levels while enhancing IL-10 production following LPS exposure in BV-2 microglia. At a dose of 50 μM, it prevents platelet aggregation caused by arachidonic acid but not that triggered by ADP, collagen, or ristocetin. Additionally, it facilitates the dilation of constricted bovine coronary arteries (ED50= 1.1 μM) and blocks VEGF-driven tubulogenesis in human microvascular endothelial cells (HMVECs).
Targets(IC50)	Others, Interleukin

Preparing Stock Solutions

	1mg	5mg	10mg
1 mM	2.7661 mL	13.8305 mL	27.661 mL
5 mM	0.5532 mL	2.7661 mL	5.5322 mL
10 mM	0.2766 mL	1.383 mL	2.7661 mL
50 mM	0.0553 mL	0.2766 mL	0.5532 mL

Please select the appropriate solvent to prepare the stock solution, according to the solubility of the product in different solvents. Please use it as soon as possible.

Note: The dilution table applies only to solid products. For liquid products, please calculate the stock solution based on the stated concentration and/or density.

Inhibitor · Natural Compounds · Compound Libraries · Recombinant Proteins

This product is for Research Use Only · Not for Human or Veterinary or Therapeutic Use

Tel:781-999-4286 E_mail:info@targetmol.com Address:34 Washington Street,Wellesley Hills,MA 02481