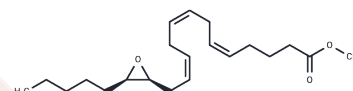


14S(15R)-EET methyl ester

Chemical Properties

CAS No. :	110901-52-5
Formula:	C ₂₁ H ₃₄ O ₃
Molecular Weight:	334.49
Storage:	Powder: -20°C for 3 years In solvent: -80°C for 1 year Actual storage temperature shall be subject to the COA.



Biological Description

Description	14S(15R)-EET methyl ester, an oxylipin derived from arachidonic acid through cytochrome P450 metabolism, demonstrates specific biological activities. It exhibits affinity for isolated guinea pig monocytes, evidenced by a competitive binding assay with a K_i value of 612.5 nM using [³ H]14(15)-EET. This compound notably enhances the dilation of precontracted isolated canine epicardial arterioles (EC_{50} = 4 pM) and denuded porcine subepicardial arterioles (EC_{50} = 3 pM), indicating potent vasodilatory effects. Unlike its isomer 14R(15S)-EET, 14S(15R)-EET methyl ester does not inhibit COX activity in enzyme assays or affect isolated platelets, highlighting its distinct functional profile.
Targets(IC ₅₀)	Others, Drug Metabolite

Preparing Stock Solutions

	1mg	5mg	10mg
1 mM	2.9896 mL	14.9481 mL	29.8963 mL
5 mM	0.5979 mL	2.9896 mL	5.9793 mL
10 mM	0.299 mL	1.4948 mL	2.9896 mL
50 mM	0.0598 mL	0.299 mL	0.5979 mL

Please select the appropriate solvent to prepare the stock solution, according to the solubility of the product in different solvents. Please use it as soon as possible.

Note: The dilution table applies only to solid products. For liquid products, please calculate the stock solution based on the stated concentration and/or density.

Inhibitor · Natural Compounds · Compound Libraries · Recombinant Proteins

This product is for Research Use Only · Not for Human or Veterinary or Therapeutic Use

Tel: 781-999-4286 E_mail: info@targetmol.com Address: 34 Washington Street, Wellesley Hills, MA 02481