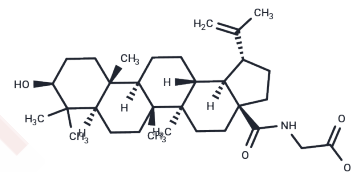


## Betulinic glycine amide

## Chemical Properties

CAS No. : 174740-40-0  
 Formula: C<sub>32</sub>H<sub>51</sub>NO<sub>4</sub>  
 Molecular Weight: 513.75  
 Storage: Powder: -20°C for 3 years | In solvent: -80°C for 1 year  
*Actual storage temperature shall be subject to the COA.*



## Biological Description

Description	Betulinic glycine amide, a pentacyclic triterpenoid derivative of betulinic acid, serves as a precursor for synthesizing derivatives with anticancer and antiviral activity.
Targets(IC50)	Others

## Preparing Stock Solutions

	1mg	5mg	10mg
1 mM	1.9465 mL	9.7324 mL	19.4647 mL
5 mM	0.3893 mL	1.9465 mL	3.8929 mL
10 mM	0.1946 mL	0.9732 mL	1.9465 mL
50 mM	0.0389 mL	0.1946 mL	0.3893 mL

Please select the appropriate solvent to prepare the stock solution, according to the solubility of the product in different solvents. Please use it as soon as possible.

Note: The dilution table applies only to solid products. For liquid products, please calculate the stock solution based on the stated concentration and/or density.

Inhibitor · Natural Compounds · Compound Libraries · Recombinant Proteins

This product is for Research Use Only · Not for Human or Veterinary or Therapeutic Use

Tel:781-999-4286 E\_mail:info@targetmol.com Address:34 Washington Street,Wellesley Hills,MA 02481