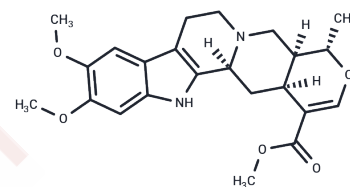


Isoreserpiline

Chemical Properties

CAS No. :	572-67-8
Formula:	C ₂₃ H ₂₈ N ₂ O ₅
Molecular Weight:	412.486
Storage:	Powder: -20°C for 3 years In solvent: -80°C for 1 year Actual storage temperature shall be subject to the COA.



Biological Description

Description	Isoreserpiline, an indole alkaloid discovered in <i>R. tetraphylla</i> , exhibits a range of biological activities. This compound enhances the antibacterial efficacy of nalidixic acid against both nalidixic acid-sensitive and -resistant <i>E. coli</i> strains through a synergistic effect. Additionally, at a dosage of 25 mg/kg, it mitigates amphetamine-induced hyperactivity in mice.
Targets(IC50)	Others, Antibacterial

Preparing Stock Solutions

	1mg	5mg	10mg
1 mM	2.4243 mL	12.1215 mL	24.243 mL
5 mM	0.4849 mL	2.4243 mL	4.8486 mL
10 mM	0.2424 mL	1.2122 mL	2.4243 mL
50 mM	0.0485 mL	0.2424 mL	0.4849 mL

Please select the appropriate solvent to prepare the stock solution, according to the solubility of the product in different solvents. Please use it as soon as possible.

Note: The dilution table applies only to solid products. For liquid products, please calculate the stock solution based on the stated concentration and/or density.

Inhibitor · Natural Compounds · Compound Libraries · Recombinant Proteins

This product is for Research Use Only · Not for Human or Veterinary or Therapeutic Use

Tel: 781-999-4286 E_mail: info@targetmol.com Address: 34 Washington Street, Wellesley Hills, MA 02481