

## Lenalidomide 4'-PEG2-azide

## Chemical Properties

CAS No. : 2399455-48-0

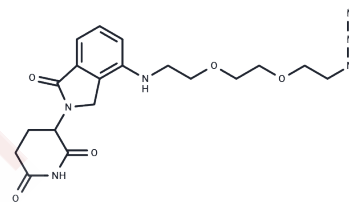
Formula: C<sub>19</sub>H<sub>24</sub>N<sub>6</sub>O<sub>5</sub>

Molecular Weight: 416.43

Keep away from direct sunlight

Storage: Powder: -20°C for 3 years | In solvent: -80°C for 1 year

Actual storage temperature shall be subject to the COA.



## Biological Description

Description	Lenalidomide 4'-PEG2-azide, a Lenalidomide-derived Cereblon ligand, facilitates the recruitment of CRBN protein. This compound can be tethered via a linker to a protein ligand, enabling the formation of PROTAC [1].
Targets(IC50)	Others,E3 Ligase Ligand-Linker Conjugates

## Preparing Stock Solutions

	1mg	5mg	10mg
1 mM	2.4014 mL	12.0068 mL	24.0136 mL
5 mM	0.4803 mL	2.4014 mL	4.8027 mL
10 mM	0.2401 mL	1.2007 mL	2.4014 mL
50 mM	0.048 mL	0.2401 mL	0.4803 mL

Please select the appropriate solvent to prepare the stock solution, according to the solubility of the product in different solvents. Please use it as soon as possible.

Note: The dilution table applies only to solid products. For liquid products, please calculate the stock solution based on the stated concentration and/or density.

Inhibitor · Natural Compounds · Compound Libraries · Recombinant Proteins

This product is for Research Use Only · Not for Human or Veterinary or Therapeutic Use

Tel:781-999-4286

E\_mail:info@targetmol.com

Address:34 Washington Street,Wellesley Hills,MA 02481