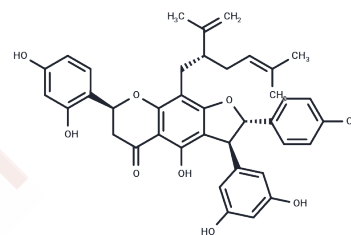


Alopecurone A

Chemical Properties

CAS No. :	162558-89-6
Formula:	C39H38O9
Molecular Weight:	650.7
Storage:	Powder: -20°C for 3 years In solvent: -80°C for 1 year Actual storage temperature shall be subject to the COA.



Biological Description

Description	Alopecurone A demonstrates potent inhibitory effects on MRP1, exhibits cytotoxic activity against DU145 (prostate cancer cell line) and MCF-7 (breast cancer cell line) with IC50 values of 2.44 and 5.44 µg/mL, respectively, and possesses antibacterial activity against methicillin-resistant Staphylococcus aureus.
Targets(IC50)	Others

Preparing Stock Solutions

	1mg	5mg	10mg
1 mM	1.5368 mL	7.684 mL	15.3681 mL
5 mM	0.3074 mL	1.5368 mL	3.0736 mL
10 mM	0.1537 mL	0.7684 mL	1.5368 mL
50 mM	0.0307 mL	0.1537 mL	0.3074 mL

Please select the appropriate solvent to prepare the stock solution, according to the solubility of the product in different solvents. Please use it as soon as possible.

Note: The dilution table applies only to solid products. For liquid products, please calculate the stock solution based on the stated concentration and/or density.

Inhibitor · Natural Compounds · Compound Libraries · Recombinant Proteins

This product is for Research Use Only · Not for Human or Veterinary or Therapeutic Use

Tel:781-999-4286 E_mail:info@targetmol.com Address:34 Washington Street,Wellesley Hills,MA 02481