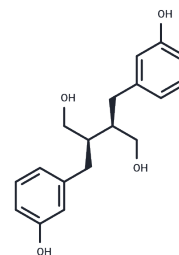


(±)-Enterodiol**Chemical Properties**

CAS No. :	77756-22-0
Formula:	C ₁₈ H ₂₂ O ₄
Molecular Weight:	302.36
Storage:	Powder: -20°C for 3 years In solvent: -80°C for 1 year Actual storage temperature shall be subject to the COA.

**Biological Description**

Description	"(±)-Enterodiol, the racemate of Enterodiol, is metabolized from lignans found in whole-grain cereals, nuts, legumes, flaxseed, and vegetables by human intestinal bacteria. This compound exhibits apoptotic effects in colorectal cancer (CRC) cells and has been identified to possess anti-cancer activities [1] [2]."
Targets(IC50)	Apoptosis,Others,Endogenous Metabolite

Preparing Stock Solutions

	1mg	5mg	10mg
1 mM	3.3073 mL	16.5366 mL	33.0732 mL
5 mM	0.6615 mL	3.3073 mL	6.6146 mL
10 mM	0.3307 mL	1.6537 mL	3.3073 mL
50 mM	0.0661 mL	0.3307 mL	0.6615 mL

Please select the appropriate solvent to prepare the stock solution, according to the solubility of the product in different solvents. Please use it as soon as possible.

Note: The dilution table applies only to solid products. For liquid products, please calculate the stock solution based on the stated concentration and/or density.

Inhibitor · Natural Compounds · Compound Libraries · Recombinant Proteins

This product is for Research Use Only · Not for Human or Veterinary or Therapeutic Use

Tel:781-999-4286 E_mail:info@targetmol.com Address:34 Washington Street,Wellesley Hills,MA 02481