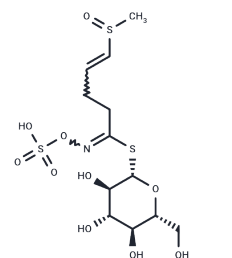


Glucoraphenin potassium

Chemical Properties

CAS No. :	108844-81-1
Formula:	C ₁₂ H ₂₀ KNO ₁₀ S ₃
Molecular Weight:	473.58
Storage:	Powder: -20°C for 3 years In solvent: -80°C for 1 year Actual storage temperature shall be subject to the COA.



Biological Description

Description	Glucoraphenin potassium, the primary orally active glucosinolate found in radish sprouts, catalyzes the induction of xenobiotic metabolizing enzymes (XMEs). It is hydrolyzed by the enzyme myrosinase into sulforaphene, which is associated with anticancerogenic effects [1] [2].
Targets(IC50)	Others

Preparing Stock Solutions

	1mg	5mg	10mg
1 mM	2.1116 mL	10.5579 mL	21.1158 mL
5 mM	0.4223 mL	2.1116 mL	4.2232 mL
10 mM	0.2112 mL	1.0558 mL	2.1116 mL
50 mM	0.0422 mL	0.2112 mL	0.4223 mL

Please select the appropriate solvent to prepare the stock solution, according to the solubility of the product in different solvents. Please use it as soon as possible.

Note: The dilution table applies only to solid products. For liquid products, please calculate the stock solution based on the stated concentration and/or density.

Inhibitor · Natural Compounds · Compound Libraries · Recombinant Proteins

This product is for Research Use Only · Not for Human or Veterinary or Therapeutic Use

Tel:781-999-4286 E_mail:info@targetmol.com Address:34 Washington Street,Wellesley Hills,MA 02481