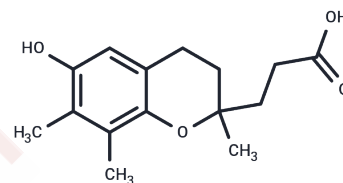


γ -CEHC

Chemical Properties

CAS No. : 178167-75-4
 Formula: C₁₅H₂₀O₄
 Molecular Weight: 264.32
 Storage: Powder: -20°C for 3 years | In solvent: -80°C for 1 year
 Actual storage temperature shall be subject to the COA.



Biological Description

Description	γ -CEHC, a metabolite of γ -tocopherol, is predominantly excreted through urine, primarily in its conjugated form as glucuronide [1], rather than through bile.
Targets(IC50)	Others,Endogenous Metabolite,Drug Metabolite

Preparing Stock Solutions

	1mg	5mg	10mg
1 mM	3.7833 mL	18.9165 mL	37.8329 mL
5 mM	0.7567 mL	3.7833 mL	7.5666 mL
10 mM	0.3783 mL	1.8916 mL	3.7833 mL
50 mM	0.0757 mL	0.3783 mL	0.7567 mL

Please select the appropriate solvent to prepare the stock solution, according to the solubility of the product in different solvents. Please use it as soon as possible.

Note: The dilution table applies only to solid products. For liquid products, please calculate the stock solution based on the stated concentration and/or density.

Inhibitor · Natural Compounds · Compound Libraries · Recombinant Proteins

This product is for Research Use Only · Not for Human or Veterinary or Therapeutic Use

Tel:781-999-4286 E_mail:info@targetmol.com Address:34 Washington Street,Wellesley Hills,MA 02481