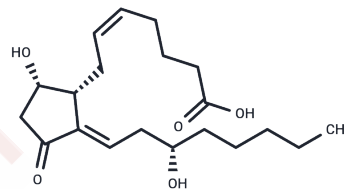


$\Delta$ 12-Prostaglandin D2

## Chemical Properties

CAS No. : 64072-89-5  
 Formula: C<sub>20</sub>H<sub>32</sub>O<sub>5</sub>  
 Molecular Weight: 352.5  
 Storage: Powder: -20°C for 3 years | In solvent: -80°C for 1 year  
 Actual storage temperature shall be subject to the COA.



## Biological Description

Description	Prostaglandin D2 (PGD2) is a primary enzymatic prostaglandin derived from PGH2 and is abundantly produced in the cerebrospinal fluid (CSF) by the lipocalin-type PGD synthase, and peripherally by myeloid cells such as mast cells and basophils via a hematopoietic-type PGD synthase. PGD2 is chemically unstable and presents challenges for use and analysis due to its brief in vivo half-life. $\Delta$ 12-PGD2, an initial decomposition product of PGD2, acts as an intermediate in the pathway to $\Delta$ 12-PGJ2, a cyclopentenone prostaglandin known for its antimitotic and carcinogenic properties. The metabolism of $\Delta$ 12-PGD2 involves the addition of thiol nucleophiles, a common pathway for many cyclopentenone prostaglandins.
Targets(IC50)	Others

## Preparing Stock Solutions

	1mg	5mg	10mg
1 mM	2.8369 mL	14.1844 mL	28.3688 mL
5 mM	0.5674 mL	2.8369 mL	5.6738 mL
10 mM	0.2837 mL	1.4184 mL	2.8369 mL
50 mM	0.0567 mL	0.2837 mL	0.5674 mL

Please select the appropriate solvent to prepare the stock solution, according to the solubility of the product in different solvents. Please use it as soon as possible.

Note: The dilution table applies only to solid products. For liquid products, please calculate the stock solution based on the stated concentration and/or density.

Inhibitor · Natural Compounds · Compound Libraries · Recombinant Proteins

This product is for Research Use Only · Not for Human or Veterinary or Therapeutic Use

Tel:781-999-4286 E\_mail:info@targetmol.com Address:34 Washington Street,Wellesley Hills,MA 02481