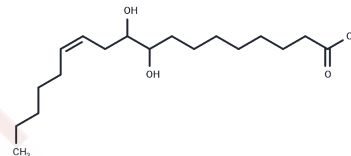


(±)9(10)-DiHOME**Chemical Properties**

CAS No. :	263399-34-4
Formula:	C ₁₈ H ₃₄ O ₄
Molecular Weight:	314.5
Storage:	Powder: -20°C for 3 years In solvent: -80°C for 1 year Actual storage temperature shall be subject to the COA.

**Biological Description**

Description	(±)9(10)-DiHOME, the diol derivative of (±)9(10)-EpOME—a cytochrome P450-derived epoxide of linoleic acid also known as leukotoxin—is formed through the action of soluble epoxide hydrolase (sEH) in neutrophils. It exhibits toxicity towards Sf21 cells expressing sEH as well as tolacZ-expressing control cells, differing from leukotoxin which only harms sEH-containing cells. Furthermore, combined exposure to 9(10)- and 12(13)-DiHOME leads to cell death in rabbit renal proximal tubule cells by disrupting mitochondrial respiration, and causes lung injury, respiratory distress, and mortality in mice, highlighting its role as a toxic lipid mediator. Specifically, 9(10)-DiHOME has been associated with acute respiratory distress syndrome (ARDS), a severe and often deadly complication in patients with major burns. Elevated levels of this compound have been detected in the bronchoalveolar lavage fluid (BALF) of women, but not men, with chronic obstructive pulmonary disease (COPD), and its levels are also increased in patients with allergic asthma, indicating its significance in respiratory conditions.
Targets(IC50)	Others,NF-κB,DNA/RNA Synthesis,PPAR

Preparing Stock Solutions

	1mg	5mg	10mg
1 mM	3.1797 mL	15.8983 mL	31.7965 mL
5 mM	0.6359 mL	3.1797 mL	6.3593 mL
10 mM	0.318 mL	1.5898 mL	3.1797 mL
50 mM	0.0636 mL	0.318 mL	0.6359 mL

Please select the appropriate solvent to prepare the stock solution, according to the solubility of the product in different solvents. Please use it as soon as possible.

Note: The dilution table applies only to solid products. For liquid products, please calculate the stock solution based on the stated concentration and/or density.

Inhibitor · Natural Compounds · Compound Libraries · Recombinant Proteins

This product is for Research Use Only · Not for Human or Veterinary or Therapeutic Use

Tel:781-999-4286 E_mail:info@targetmol.com Address:34 Washington Street,Wellesley Hills,MA 02481