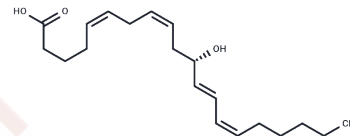


## 11(S)-HETE

## Chemical Properties

CAS No. :	54886-50-9
Formula:	C <sub>20</sub> H <sub>32</sub> O <sub>3</sub>
Molecular Weight:	320.5
Storage:	Powder: -20°C for 3 years   In solvent: -80°C for 1 year Actual storage temperature shall be subject to the COA.



## Biological Description

Description	11(S)-HETE, an (S) enantiomer of 11(R)-HETE and a type of oxylipin, is non-enzymatically synthesized from arachidonic acid. Compared to its counterpart, 11(S)-HETE levels are found to be elevated in both isolated human plasma and serum, as well as in LPS-stimulated isolated human plasma. Notably, patients with allergic rhinitis exhibit a decrease in 11(S)-HETE levels in their serum following one year of double-mite subcutaneous immunotherapy (DM-SCIT), correlating with an enhanced quality of life, particularly in aspects related to rhinoconjunctivitis.
Targets(IC50)	Others

## Preparing Stock Solutions

	1mg	5mg	10mg
1 mM	3.1201 mL	15.6006 mL	31.2012 mL
5 mM	0.624 mL	3.1201 mL	6.2402 mL
10 mM	0.312 mL	1.5601 mL	3.1201 mL
50 mM	0.0624 mL	0.312 mL	0.624 mL

Please select the appropriate solvent to prepare the stock solution, according to the solubility of the product in different solvents. Please use it as soon as possible.

Note: The dilution table applies only to solid products. For liquid products, please calculate the stock solution based on the stated concentration and/or density.

**Inhibitor · Natural Compounds · Compound Libraries · Recombinant Proteins**

This product is for Research Use Only · Not for Human or Veterinary or Therapeutic Use

Tel: 781-999-4286 E\_mail: info@targetmol.com Address: 34 Washington Street, Wellesley Hills, MA 02481