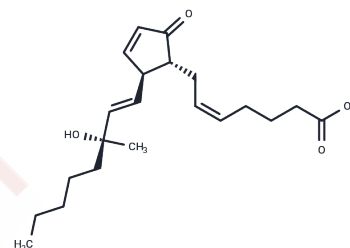


15(R)-15-methyl Prostaglandin A2

Chemical Properties

CAS No. :	96440-68-5
Formula:	C ₂₁ H ₃₂ O ₄
Molecular Weight:	348.483
Storage:	Powder: -20°C for 3 years In solvent: -80°C for 1 year Actual storage temperature shall be subject to the COA.



Biological Description

Description	Arbaprostil, a synthetic analog of prostaglandin E2 (PGE2) known as 15(R)-15-methyl prostaglandin E2, was developed for its cytoprotective activity. In the commercial production of bulk arbaprostil, one potential impurity is 15(R)-15-methyl Prostaglandin A2 (15(R)-15-methyl PGA2). The pharmacology and EP receptor binding affinity of 15(R)-15-methyl PGA2 have not been reported.
Targets(IC50)	Others

Preparing Stock Solutions

	1mg	5mg	10mg
1 mM	2.8696 mL	14.348 mL	28.6961 mL
5 mM	0.5739 mL	2.8696 mL	5.7392 mL
10 mM	0.287 mL	1.4348 mL	2.8696 mL
50 mM	0.0574 mL	0.287 mL	0.5739 mL

Please select the appropriate solvent to prepare the stock solution, according to the solubility of the product in different solvents. Please use it as soon as possible.

Note: The dilution table applies only to solid products. For liquid products, please calculate the stock solution based on the stated concentration and/or density.

Inhibitor · Natural Compounds · Compound Libraries · Recombinant Proteins

This product is for Research Use Only · Not for Human or Veterinary or Therapeutic Use

Tel: 781-999-4286 E_mail: info@targetmol.com Address: 34 Washington Street, Wellesley Hills, MA 02481