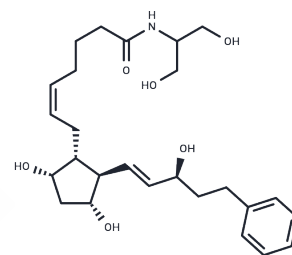


Bima SA

Chemical Properties

CAS No. :	1175838-84-2
Formula:	C ₂₆ H ₃₉ N ₁ O ₆
Molecular Weight:	461.59
Storage:	Powder: -20°C for 3 years In solvent: -80°C for 1 year Actual storage temperature shall be subject to the COA.



Biological Description

Description	Bimatoprost Serinol Amide (Bima SA), a prostaglandin analog, shows research potential for glaucoma [1].
Targets(IC50)	Others, Prostaglandin Receptor

Preparing Stock Solutions

	1mg	5mg	10mg
1 mM	2.1664 mL	10.8321 mL	21.6642 mL
5 mM	0.4333 mL	2.1664 mL	4.3328 mL
10 mM	0.2166 mL	1.0832 mL	2.1664 mL
50 mM	0.0433 mL	0.2166 mL	0.4333 mL

Please select the appropriate solvent to prepare the stock solution, according to the solubility of the product in different solvents. Please use it as soon as possible.

Note: The dilution table applies only to solid products. For liquid products, please calculate the stock solution based on the stated concentration and/or density.

Inhibitor · Natural Compounds · Compound Libraries · Recombinant Proteins

This product is for Research Use Only · Not for Human or Veterinary or Therapeutic Use

Tel: 781-999-4286 E_mail: info@targetmol.com Address: 34 Washington Street, Wellesley Hills, MA 02481