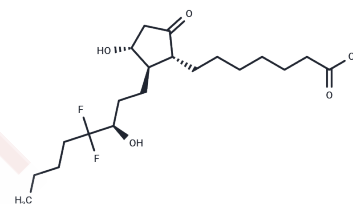


13,14-dihydro-16,16-difluoro Prostaglandin E1

Chemical Properties

CAS No. : 475992-30-4
 Formula: C₂₀H₃₄F₂O₅
 Molecular Weight: 392.484
 Storage: Powder: -20°C for 3 years | In solvent: -80°C for 1 year
 Actual storage temperature shall be subject to the COA.



Biological Description

Description	Prostaglandin E1 (PGE1), synthesized through cyclooxygenase-mediated metabolism of dihomo- γ -linolenic acid (DGLA), functions by inhibiting platelet aggregation (IC ₅₀ = 40 nM) and enhancing vasodilation. Its analog, 13,14-dihydro-16,16-difluoro PGE1, and the metabolite, 13,14-dihydro PGE1, both retain similar anti-aggregatory properties to the original compound. The inclusion of two electron-withdrawing fluorine atoms in 13,14-dihydro-16,16-difluoro PGE1 is believed to increase molecular stability and potentially extend bioavailability by resisting hydrolytic degradation.
Targets(IC50)	Others, Drug Metabolite

Preparing Stock Solutions

	1mg	5mg	10mg
1 mM	2.5479 mL	12.7395 mL	25.479 mL
5 mM	0.5096 mL	2.5479 mL	5.0958 mL
10 mM	0.2548 mL	1.274 mL	2.5479 mL
50 mM	0.051 mL	0.2548 mL	0.5096 mL

Please select the appropriate solvent to prepare the stock solution, according to the solubility of the product in different solvents. Please use it as soon as possible.

Note: The dilution table applies only to solid products. For liquid products, please calculate the stock solution based on the stated concentration and/or density.

Inhibitor · Natural Compounds · Compound Libraries · Recombinant Proteins

This product is for Research Use Only · Not for Human or Veterinary or Therapeutic Use

Tel: 781-999-4286 E_mail: info@targetmol.com Address: 34 Washington Street, Wellesley Hills, MA 02481