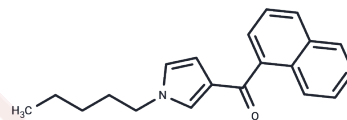


JWH 030

## Chemical Properties

CAS No. : 162934-73-8  
 Formula: C<sub>20</sub>H<sub>21</sub>NO  
 Molecular Weight: 291.394  
 Storage: Powder: -20°C for 3 years | In solvent: -80°C for 1 year  
 Actual storage temperature shall be subject to the COA.



## Biological Description

Description	JWH 030 is a potent naphthoyl pyrrole cannabinimimetic, exhibiting higher affinity for the CB1 receptor (EC <sub>50</sub> = 30.5 nM in rats, K <sub>i</sub> = 87 nM in mice) compared to CB2 (EC <sub>50</sub> = 552 nM in human CB2 receptors). The compound demonstrates significant in vivo potency in mouse models, specifically in spontaneous activity and tail flick assays (antinociception) with an ED <sub>50</sub> value of 26.8 μM/kg. Furthermore, JWH 030 dose-dependently reduces electrically-induced contractions in the mouse vas deferens, with an IC <sub>50</sub> of 3.38 nM, highlighting its effective modulatory effects. This compound is designated for forensic or research applications.
Targets(IC <sub>50</sub> )	Others

## Preparing Stock Solutions

	1mg	5mg	10mg
1 mM	3.4318 mL	17.1591 mL	34.3183 mL
5 mM	0.6864 mL	3.4318 mL	6.8637 mL
10 mM	0.3432 mL	1.7159 mL	3.4318 mL
50 mM	0.0686 mL	0.3432 mL	0.6864 mL

Please select the appropriate solvent to prepare the stock solution, according to the solubility of the product in different solvents. Please use it as soon as possible.

Note: The dilution table applies only to solid products. For liquid products, please calculate the stock solution based on the stated concentration and/or density.

Inhibitor · Natural Compounds · Compound Libraries · Recombinant Proteins

This product is for Research Use Only · Not for Human or Veterinary or Therapeutic Use

Tel: 781-999-4286 E\_mail: info@targetmol.com Address: 34 Washington Street, Wellesley Hills, MA 02481