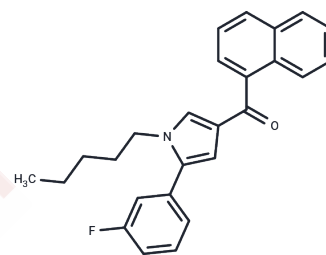


JWH 368

## Chemical Properties

CAS No. : 914458-31-4  
 Formula: C<sub>26</sub>H<sub>24</sub>FNO  
 Molecular Weight: 385.482  
 Storage: Powder: -20°C for 3 years | In solvent: -80°C for 1 year  
 Actual storage temperature shall be subject to the COA.



## Biological Description

Description	JWH 368 is a (1-naphthoyl)pyrrole cannabinoid (CB) known for its potent activation of central cannabinoid (CB1) and peripheral cannabinoid (CB2) receptors, with $K_i$ values of 16 and 9.1 nM, respectively. Its physiological, neurological, and toxicological properties have yet to be evaluated, indicating that this compound is strictly intended for forensic and research applications.
Targets(IC50)	Others

## Preparing Stock Solutions

	1mg	5mg	10mg
1 mM	2.5942 mL	12.9708 mL	25.9417 mL
5 mM	0.5188 mL	2.5942 mL	5.1883 mL
10 mM	0.2594 mL	1.2971 mL	2.5942 mL
50 mM	0.0519 mL	0.2594 mL	0.5188 mL

Please select the appropriate solvent to prepare the stock solution, according to the solubility of the product in different solvents. Please use it as soon as possible.

Note: The dilution table applies only to solid products. For liquid products, please calculate the stock solution based on the stated concentration and/or density.

Inhibitor · Natural Compounds · Compound Libraries · Recombinant Proteins

This product is for Research Use Only · Not for Human or Veterinary or Therapeutic Use

Tel: 781-999-4286 E\_mail: info@targetmol.com Address: 34 Washington Street, Wellesley Hills, MA 02481