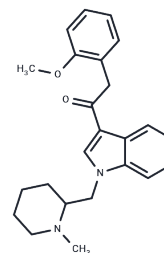


## Cannabipiperidiethanone

## Chemical Properties

CAS No. :	1345970-43-5
Formula:	C <sub>24</sub> H <sub>28</sub> N <sub>2</sub> O <sub>2</sub>
Molecular Weight:	376.5
Storage:	Powder: -20°C for 3 years   In solvent: -80°C for 1 year Actual storage temperature shall be subject to the COA.



## Biological Description

Description	Cannabipiperidiethanone, a synthetic cannabinoid structurally similar to JWH 250 and AM2233, has been detected in prohibited "herbal" blends in Japan. It exhibits affinity for CB1 and CB2 receptors with IC <sub>50</sub> values of 591 nM and 968 nM, respectively. Compared to JWH 250, its affinities for CB1 and CB2 receptors are 2.3- and 9.4-fold lower, and 13- and 70-fold lower than (R)-(+)-WIN 55,212-2, respectively. Cannabipiperidiethanone is designated for forensic and research purposes only.
Targets(IC <sub>50</sub> )	Others

## Preparing Stock Solutions

	1mg	5mg	10mg
1 mM	2.656 mL	13.2802 mL	26.5604 mL
5 mM	0.5312 mL	2.656 mL	5.3121 mL
10 mM	0.2656 mL	1.328 mL	2.656 mL
50 mM	0.0531 mL	0.2656 mL	0.5312 mL

Please select the appropriate solvent to prepare the stock solution, according to the solubility of the product in different solvents. Please use it as soon as possible.

Note: The dilution table applies only to solid products. For liquid products, please calculate the stock solution based on the stated concentration and/or density.

Inhibitor · Natural Compounds · Compound Libraries · Recombinant Proteins

This product is for Research Use Only · Not for Human or Veterinary or Therapeutic Use

Tel:781-999-4286 E\_mail:info@targetmol.com Address:34 Washington Street,Wellesley Hills,MA 02481