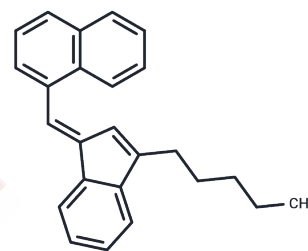


JWH 176

Chemical Properties

CAS No. : 619294-62-1
 Formula: C₂₅H₂₄
 Molecular Weight: 324.5
 Storage: Powder: -20°C for 3 years | In solvent: -80°C for 1 year
 Actual storage temperature shall be subject to the COA.



Biological Description

Description	JWH-176 is a cannabimimetic indene hydrocarbon, exhibiting high affinity for the central cannabinoid (CB1) receptor (K _i = 26 nM), originally synthesized to investigate hydrogen bonding and aromatic stacking's roles in CB1 receptor docking studies. Intended for forensic and research applications, this compound's design facilitates the exploration of CB1 receptor interactions.
Targets(IC50)	Others

Preparing Stock Solutions

	1mg	5mg	10mg
1 mM	3.0817 mL	15.4083 mL	30.8166 mL
5 mM	0.6163 mL	3.0817 mL	6.1633 mL
10 mM	0.3082 mL	1.5408 mL	3.0817 mL
50 mM	0.0616 mL	0.3082 mL	0.6163 mL

Please select the appropriate solvent to prepare the stock solution, according to the solubility of the product in different solvents. Please use it as soon as possible.

Note: The dilution table applies only to solid products. For liquid products, please calculate the stock solution based on the stated concentration and/or density.

Inhibitor · Natural Compounds · Compound Libraries · Recombinant Proteins

This product is for Research Use Only · Not for Human or Veterinary or Therapeutic Use

Tel:781-999-4286 E_mail:info@targetmol.com Address:34 Washington Street,Wellesley Hills,MA 02481