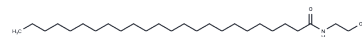


Lignoceroyl Ethanolamide

Chemical Properties

CAS No. :	10015-68-6
Formula:	C26H53NO2
Molecular Weight:	411.715
Storage:	Powder: -20°C for 3 years In solvent: -80°C for 1 year Actual storage temperature shall be subject to the COA.



Biological Description

Description	Lignoceroyl ethanolamide, a fatty N-acyl ethanolamine within the endocannabinoid family, is derived from lignoceric acid, which is found in relatively high concentrations in rat cerebrospinal fluid. However, the specific function and significance of this metabolite remain unclear.
Targets(IC50)	Others,Endogenous Metabolite

Preparing Stock Solutions

	1mg	5mg	10mg
1 mM	2.4288 mL	12.1442 mL	24.2884 mL
5 mM	0.4858 mL	2.4288 mL	4.8577 mL
10 mM	0.2429 mL	1.2144 mL	2.4288 mL
50 mM	0.0486 mL	0.2429 mL	0.4858 mL

Please select the appropriate solvent to prepare the stock solution, according to the solubility of the product in different solvents. Please use it as soon as possible.

Note: The dilution table applies only to solid products. For liquid products, please calculate the stock solution based on the stated concentration and/or density.

Inhibitor · Natural Compounds · Compound Libraries · Recombinant Proteins

This product is for Research Use Only · Not for Human or Veterinary or Therapeutic Use

Tel:781-999-4286 E_mail:info@targetmol.com Address:34 Washington Street,Wellesley Hills,MA 02481