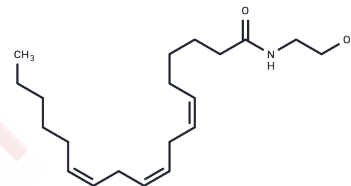


$\gamma$ -Linolenoyl monoethanolamide

## Chemical Properties

CAS No. :	150314-37-7
Formula:	C <sub>20</sub> H <sub>35</sub> NO <sub>2</sub>
Molecular Weight:	321.505
Storage:	Powder: -20°C for 3 years   In solvent: -80°C for 1 year Actual storage temperature shall be subject to the COA.



## Biological Description

Description	$\gamma$ -Linolenoyl monoethanolamide, a fatty N-acyl ethanolamine, acts as an endocannabinoid [1] [2].
Targets(IC50)	Cannabinoid Receptor,Others

## Preparing Stock Solutions

	1mg	5mg	10mg
1 mM	3.1103 mL	15.5516 mL	31.1032 mL
5 mM	0.6221 mL	3.1103 mL	6.2206 mL
10 mM	0.311 mL	1.5552 mL	3.1103 mL
50 mM	0.0622 mL	0.311 mL	0.6221 mL

Please select the appropriate solvent to prepare the stock solution, according to the solubility of the product in different solvents. Please use it as soon as possible.

Note: The dilution table applies only to solid products. For liquid products, please calculate the stock solution based on the stated concentration and/or density.

Inhibitor · Natural Compounds · Compound Libraries · Recombinant Proteins

This product is for Research Use Only · Not for Human or Veterinary or Therapeutic Use

Tel:781-999-4286 E\_mail:info@targetmol.com Address:34 Washington Street,Wellesley Hills,MA 02481