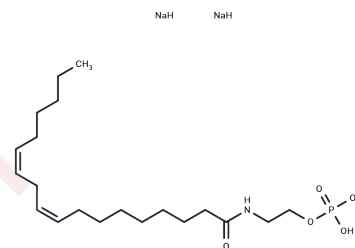


Linoleoyl Ethanolamide Phosphate

Chemical Properties

CAS No. : 419566-71-5
 Formula: C₂₀H₄₀NNa₂O₅P
 Molecular Weight: 451.495
 Storage: Powder: -20°C for 3 years | In solvent: -80°C for 1 year
 Actual storage temperature shall be subject to the COA.



Biological Description

Description	Linoleoyl ethanolamide phosphate is an intermediate in the biosynthesis of linoleoyl ethanolamide, generated through phospholipase C-mediated hydrolysis of N-acylphosphatidylethanolamine. Linoleoyl ethanolamide phosphate, along with other endogenous N-acylethanolamines, is thought to regulate food intake by selectively prolonging feeding latency and post-meal interval [Linoleoyl Ethanolamide Phosphate].
Targets(IC50)	Others

Preparing Stock Solutions

	1mg	5mg	10mg
1 mM	2.2148 mL	11.0742 mL	22.1484 mL
5 mM	0.443 mL	2.2148 mL	4.4297 mL
10 mM	0.2215 mL	1.1074 mL	2.2148 mL
50 mM	0.0443 mL	0.2215 mL	0.443 mL

Please select the appropriate solvent to prepare the stock solution, according to the solubility of the product in different solvents. Please use it as soon as possible.

Note: The dilution table applies only to solid products. For liquid products, please calculate the stock solution based on the stated concentration and/or density.

Inhibitor · Natural Compounds · Compound Libraries · Recombinant Proteins

This product is for Research Use Only · Not for Human or Veterinary or Therapeutic Use

Tel: 781-999-4286 E_mail: info@targetmol.com Address: 34 Washington Street, Wellesley Hills, MA 02481