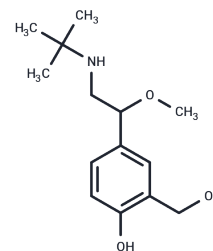


## Albuterol methyl ether

## Chemical Properties

CAS No. :	870076-72-5
Formula:	C14H23NO3
Molecular Weight:	253.3
Storage:	Powder: -20°C for 3 years   In solvent: -80°C for 1 year Actual storage temperature shall be subject to the COA.



## Biological Description

Description	Salbutamol (albuterol), a selective $\beta$ 2-adrenergic partial agonist, serves as a bronchodilator widely used in various clinical scenarios and to counteract doping abuse. Its process impurity, Albuterol methyl ether, may be present in urine samples, highlighting the importance of detection and chemical analysis.
Targets(IC50)	Others,Drug Metabolite

## Preparing Stock Solutions

	1mg	5mg	10mg
1 mM	3.9479 mL	19.7394 mL	39.4789 mL
5 mM	0.7896 mL	3.9479 mL	7.8958 mL
10 mM	0.3948 mL	1.9739 mL	3.9479 mL
50 mM	0.079 mL	0.3948 mL	0.7896 mL

Please select the appropriate solvent to prepare the stock solution, according to the solubility of the product in different solvents. Please use it as soon as possible.

Note: The dilution table applies only to solid products. For liquid products, please calculate the stock solution based on the stated concentration and/or density.

Inhibitor · Natural Compounds · Compound Libraries · Recombinant Proteins

This product is for Research Use Only · Not for Human or Veterinary or Therapeutic Use

Tel:781-999-4286 E\_mail:info@targetmol.com Address:34 Washington Street,Wellesley Hills,MA 02481