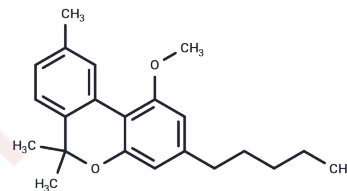


Cannabinol methyl ether

Chemical Properties

CAS No. :	41935-92-6
Formula:	C ₂₂ H ₂₈ O ₂
Molecular Weight:	324.5
Storage:	Powder: -20°C for 3 years In solvent: -80°C for 1 year Actual storage temperature shall be subject to the COA.



Biological Description

Description	Cannabinol methyl ether, a phytocannabinoid, serves as an analytical reference standard. This compound can be obtained through isolation from Cannabis plants, derived from cannabinol, or synthesized. The physiological and toxicological properties of cannabinol methyl ether remain unknown. It is designed exclusively for research and forensic applications.
Targets(IC50)	Cannabinoid Receptor,Others

Preparing Stock Solutions

	1mg	5mg	10mg
1 mM	3.0817 mL	15.4083 mL	30.8166 mL
5 mM	0.6163 mL	3.0817 mL	6.1633 mL
10 mM	0.3082 mL	1.5408 mL	3.0817 mL
50 mM	0.0616 mL	0.3082 mL	0.6163 mL

Please select the appropriate solvent to prepare the stock solution, according to the solubility of the product in different solvents. Please use it as soon as possible.

Note: The dilution table applies only to solid products. For liquid products, please calculate the stock solution based on the stated concentration and/or density.

Inhibitor · Natural Compounds · Compound Libraries · Recombinant Proteins

This product is for Research Use Only · Not for Human or Veterinary or Therapeutic Use

Tel:781-999-4286 E_mail:info@targetmol.com Address:34 Washington Street,Wellesley Hills,MA 02481