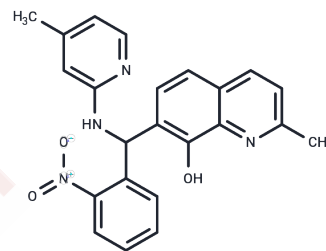


BoNT-IN-1

Chemical Properties

CAS No. :	694443-03-3
Formula:	C ₂₃ H ₂₀ N ₄ O ₃
Molecular Weight:	400.43
Storage:	Store at low temperature Powder: -20°C for 3 years In solvent: -80°C for 1 year <i>Actual storage temperature shall be subject to the COA.</i>



Biological Description

Description	BoNT-IN-1 is a potent inhibitor of Botulinum neurotoxin A light chain (BoNTA LC) with an IC ₅₀ of 0.9 μM.
Targets(IC ₅₀)	Others,Antibacterial,Antibiotic

Solubility Information

Solubility	DMSO: 80 mg/mL (199.79 mM),Sonication is recommended. (< 1 mg/ml refers to the product slightly soluble or insoluble)
In vivo Formulation	10% DMSO+40% PEG300+5% Tween 80+45% Saline: 3.3 mg/mL (8.24 mM),Sonication is recommended. <i>Please add the solvents sequentially, clarifying the solution as much as possible before adding the next one. Dissolve by heating and/or sonication if necessary. Working solution is recommended to be prepared and used immediately. The formulation provided above is for reference purposes only. In vivo formulations may vary and should be modified based on specific experimental conditions.</i>

Preparing Stock Solutions

	1mg	5mg	10mg
1 mM	2.4973 mL	12.4866 mL	24.9732 mL
5 mM	0.4995 mL	2.4973 mL	4.9946 mL
10 mM	0.2497 mL	1.2487 mL	2.4973 mL
50 mM	0.0499 mL	0.2497 mL	0.4995 mL

Please select the appropriate solvent to prepare the stock solution, according to the solubility of the product in different solvents. Please use it as soon as possible.

Note: The dilution table applies only to solid products. For liquid products, please calculate the stock solution based on the stated concentration and/or density.

Reference

Caglic D, et al. Identification of clinically viable quinolinol inhibitors of botulinum neurotoxin A light chain. J Med Chem. 2014 Feb 13;57(3):669-676.

Inhibitor · Natural Compounds · Compound Libraries · Recombinant Proteins

This product is for Research Use Only · Not for Human or Veterinary or Therapeutic Use

Tel:781-999-4286 E_mail:info@targetmol.com Address:34 Washington Street,Wellesley Hills,MA 02481