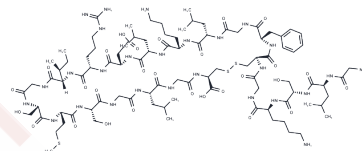


C-Type Natriuretic Peptide (CNP) (1-22), human

Chemical Properties

CAS No. :	127869-51-6
Formula:	C93H157N27O28S3
Molecular Weight:	2197.6
Storage:	Keep away from moisture Powder: -20°C for 3 years In solvent: -80°C for 1 year <small>Actual storage temperature shall be subject to the COA.</small>



Biological Description

Description	C-Type Natriuretic Peptide (CNP) (1-22), human, is the 1-22 fragment of the parent C-Type Natriuretic Peptide.
Targets(IC50)	RAAS,Histamine Receptor

Solubility Information

Solubility	H2O: 9.6 mg/mL (4.37 mM),Sonication is recommended. (< 1 mg/ml refers to the product slightly soluble or insoluble)
------------	--

Preparing Stock Solutions

	1mg	5mg	10mg
1 mM	0.455 mL	2.2752 mL	4.5504 mL
5 mM	0.091 mL	0.455 mL	0.9101 mL
10 mM	0.0455 mL	0.2275 mL	0.455 mL
50 mM	0.0091 mL	0.0455 mL	0.091 mL

Please select the appropriate solvent to prepare the stock solution, according to the solubility of the product in different solvents. Please use it as soon as possible.

Note: The dilution table applies only to solid products. For liquid products, please calculate the stock solution based on the stated concentration and/or density.

Reference

Mazarati AM, et al. ANP(1-28), BNP(1-32) and CNP(1-22) increase the severity of picrotoxin-kindled seizure syndrome in rats. Life Sci. 1993;52(3):PL19-24.

Meng L, Lu Y, Wang X, et al.NPRC deletion attenuates cardiac fibrosis in diabetic mice by activating PKA/PKG and inhibiting TGF-β1/Smad pathways.Science Advances.2023, 9(31): eadd4222.

Inhibitor · Natural Compounds · Compound Libraries · Recombinant Proteins

This product is for Research Use Only · Not for Human or Veterinary or Therapeutic Use

Tel:781-999-4286 E_mail:info@targetmol.com Address:34 Washington Street,Wellesley Hills,MA 02481