

CXCL-CXCR1/2-IN-1

Chemical Properties

CAS No. : 2415653-55-1

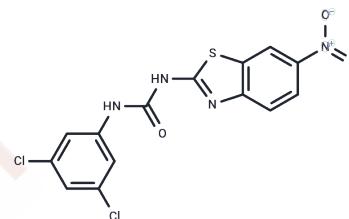
Formula: C₁₄H₈Cl₂N₄O₃S

Molecular Weight: 383.21

Store at low temperature

Storage: Powder: -20°C for 3 years | In solvent: -80°C for 1 year

Actual storage temperature shall be subject to the COA.



Biological Description

Description	CXCL-CXCR1/2-IN-1 is an orally active and potent inhibitor of the ELR+CXCL-CXCR1/2 pathway with anticancer and anti-angiogenic activity and can be used to study cardiovascular disease and cancer.
Targets(IC50)	CXCR
In vitro	CXCL-CXCR1/2-IN-1 (compound 10; 1-2.5 μM; 24-48h; A498 cells) showed reduced ERK and AKT phosphorylation in A498 cells. CXCL-CXCR1/2-IN-1 also can inhibit the secretion of CXCL1, CXCL5, and CXCL8, which are representative pro-angiogenic ELR+CXCL cytokines.[1]
In vivo	CXCL-CXCR1/2-IN-1 (1 μM; 48h; Female NOD SCID mice injected with 786 RCC cells) reduces the metastatic area in zebrafish embryos injected with A498 cells.[1] CXCL-CXCR1/2-IN-1 (100 mg/kg; oral gavage; twice a day; for 28 days) inhibits tumor growth in mice.[1]

Solubility Information

Solubility	DMSO: 2 mg/mL (5.22 mM),Sonication is recommended. (< 1 mg/ml refers to the product slightly soluble or insoluble)
------------	---

Preparing Stock Solutions

	1mg	5mg	10mg
1 mM	2.6095 mL	13.0477 mL	26.0954 mL
5 mM	0.5219 mL	2.6095 mL	5.2191 mL
10 mM	0.261 mL	1.3048 mL	2.6095 mL
50 mM	0.0522 mL	0.261 mL	0.5219 mL

Please select the appropriate solvent to prepare the stock solution, according to the solubility of the product in different solvents. Please use it as soon as possible.

Note: The dilution table applies only to solid products. For liquid products, please calculate the stock solution based on the stated concentration and/or density.

Reference

Oleksandr Grytsai, et al. A Potent Solution for Tumor Growth and Angiogenesis Suppression via an ELR+CXCL-CXCR1/2 Pathway Inhibitor. ACS Med. Chem. Lett. April 3, 2024.

Inhibitor · Natural Compounds · Compound Libraries · Recombinant Proteins

This product is for Research Use Only · Not for Human or Veterinary or Therapeutic Use

Tel:781-999-4286 E_mail:info@targetmol.com Address:34 Washington Street,Wellesley Hills,MA 02481