

(Iso)-WAY-260022

Chemical Properties

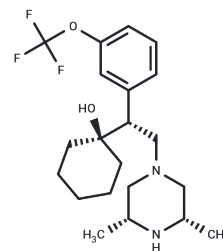
CAS No. : 1214914-38-1

Formula: C₂₁H₃₁F₃N₂O₂

Molecular Weight: 400.48

Storage: Pure form: -20°C for 3 years | In solvent: -80°C for 1 year

Actual storage temperature shall be subject to the COA.



Biological Description

Description	(Iso)-WAY-260022 ((Iso)-NRI-022) is a stereoisomer of WAY-260022, a norepinephrine reuptake inhibitor and selective inhibitor of 5-hydroxytryptamine and dopamine transport proteins.
-------------	---

Targets(IC50)	Others,Dopamine Receptor,Serotonin Transporter
---------------	--

Preparing Stock Solutions

	1mg	5mg	10mg
1 mM	2.497 mL	12.485 mL	24.970 mL
5 mM	0.4994 mL	2.497 mL	4.994 mL
10 mM	0.2497 mL	1.2485 mL	2.497 mL
50 mM	0.0499 mL	0.2497 mL	0.4994 mL

Please select the appropriate solvent to prepare the stock solution, according to the solubility of the product in different solvents. Please use it as soon as possible.

Note: The dilution table applies only to solid products. For liquid products, please calculate the stock solution based on the stated concentration and/or density.

Reference

Gavrin LK, et al. Discovery of WAY-260022, a Potent and Selective Inhibitor of the Norepinephrine Transporter. ACS Med Chem Lett. 2010 Mar 25;1(3):91-5.

Inhibitor · Natural Compounds · Compound Libraries · Recombinant Proteins

This product is for Research Use Only · Not for Human or Veterinary or Therapeutic Use

Tel:781-999-4286

E_mail:info@targetmol.com

Address:34 Washington Street,Wellesley Hills,MA 02481