

Silibinin-D3

Chemical Properties

CAS No. :

Formula: C₂₅H₂₂O₁₀

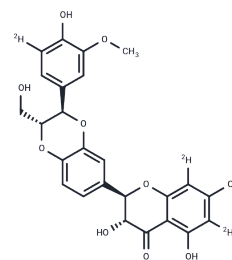
Molecular Weight: 485.46

Storage:

Keep away from moisture, Keep away from direct sunlight

Powder: -20°C for 3 years | In solvent: -80°C for 1 year

Actual storage temperature shall be subject to the COA.



Biological Description

Description	Silibinin-D3 is the deuterium-labelled compound of silibinin, used for isotope tracing. Silibinin (T1660) is the primary active component of milk thistle, capable of inhibiting cancer cell proliferation and migration.
Targets(IC50)	NF-κB, Autophagy, ROS

Preparing Stock Solutions

	1mg	5mg	10mg
1 mM	2.0599 mL	10.2995 mL	20.599 mL
5 mM	0.412 mL	2.0599 mL	4.1198 mL
10 mM	0.206 mL	1.030 mL	2.0599 mL
50 mM	0.0412 mL	0.206 mL	0.412 mL

Please select the appropriate solvent to prepare the stock solution, according to the solubility of the product in different solvents. Please use it as soon as possible.

Note: The dilution table applies only to solid products. For liquid products, please calculate the stock solution based on the stated concentration and/or density.

Reference

Menezes JC, Faustino MA, de Oliveira KT, Uliana MP, Ferreira VF, Hackbarth S, Röder B, Teixeira Tasso T, Furuyama T, Kobayashi N, Silva AM, Neves MG, Cavaleiro JA. Synthesis of new chlorine6 trimethyl and protoporphyrinIX dimethyl ester derivatives and their photophysical and electrochemical characterizations. Chemistry. 2014 Oct 13; 20(42):13644-55.

Inhibitor · Natural Compounds · Compound Libraries · Recombinant Proteins

This product is for Research Use Only · Not for Human or Veterinary or Therapeutic Use

Tel: 781-999-4286

E_mail: info@targetmol.com

Address: 34 Washington Street, Wellesley Hills, MA 02481