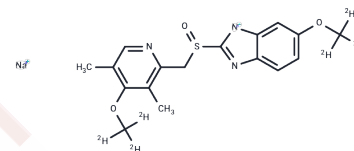


Esomeprazole sodium-D6

Chemical Properties

CAS No. :	922731-04-2
Formula:	C ₁₇ H ₁₂ D ₆ N ₃ NaO ₃ S
Molecular Weight:	373.44
Storage:	Powder: -20°C for 3 years In solvent: -80°C for 1 year Actual storage temperature shall be subject to the COA.



Biological Description

Description	Esomeprazole sodium-D6 is a deuterated compound of Esomeprazole sodium. Esomeprazole sodium (T2686L) has a CAS number of 161796-78-7. Esomeprazole Sodium is the S-isomer of omeprazole with selective and irreversible proton pump inhibitor activity. Esomeprazole acts as an exosome inhibitor by blocking the exosome release via the inhibition of V-H ⁺ -ATPases
Targets(IC50)	Proton pump

Preparing Stock Solutions

	1mg	5mg	10mg
1 mM	2.6778 mL	13.389 mL	26.7781 mL
5 mM	0.5356 mL	2.6778 mL	5.3556 mL
10 mM	0.2678 mL	1.3389 mL	2.6778 mL
50 mM	0.0536 mL	0.2678 mL	0.5356 mL

Please select the appropriate solvent to prepare the stock solution, according to the solubility of the product in different solvents. Please use it as soon as possible.

Note: The dilution table applies only to solid products. For liquid products, please calculate the stock solution based on the stated concentration and/or density.

Reference

1. Kumar P, et al. Drug Deliv Transl Res. 2015 Jun;5(3):243-56.

Inhibitor · Natural Compounds · Compound Libraries · Recombinant Proteins

This product is for Research Use Only · Not for Human or Veterinary or Therapeutic Use

Tel: 781-999-4286 E_mail: info@targetmol.com Address: 34 Washington Street, Wellesley Hills, MA 02481