

DL-Metanephrine-D3 hydrochloride

Chemical Properties

CAS No. : 1085333-94-3

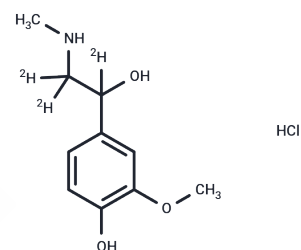
Formula: C₁₀H₁₃D₃ClNO₃

Molecular Weight: 236.71

Storage: Keep away from direct sunlight, Store at low temperature

Powder: -20°C for 3 years | In solvent: -80°C for 1 year

Actual storage temperature shall be subject to the COA.



Biological Description

| | |
|---------------|--|
| Description | DL-Metanephrine-D3 hydrochloride is L-Metanephrine labeled with deuterium atoms and can be used to study the metabolic flow of L-Metanephrine in the body. |
| Targets(IC50) | Others |
| In vitro | In some cases, deuterated compounds may offer advantages over nondeuterated compounds, often through altered clearance. Deuteration may also redirect metabolic pathways in a direction that reduces toxicity. Approval of other deuterated compounds may soon follow. Clinicians need to become familiar with the dosing, efficacy, potential side effects, and unique metabolic profiles of these new entities.[2] |

Preparing Stock Solutions

| | 1mg | 5mg | 10mg |
|-------|-----------|------------|------------|
| 1 mM | 4.2246 mL | 21.1229 mL | 42.2458 mL |
| 5 mM | 0.8449 mL | 4.2246 mL | 8.4492 mL |
| 10 mM | 0.4225 mL | 2.1123 mL | 4.2246 mL |
| 50 mM | 0.0845 mL | 0.4225 mL | 0.8449 mL |

Please select the appropriate solvent to prepare the stock solution, according to the solubility of the product in different solvents. Please use it as soon as possible.

Note: The dilution table applies only to solid products. For liquid products, please calculate the stock solution based on the stated concentration and/or density.

Reference

Yanjiao X, et al. Evaluation of the inhibitory effects of antihypertensive drugs on human carboxylesterase in vitro. Drug Metab Pharmacokinet. 2013;28(6):468-74. doi: 10.2133/dmpk.dmpk-12-rg-143.

Russak EM, et al. Impact of Deuterium Substitution on the Pharmacokinetics of Pharmaceuticals. Ann Pharmacother. 2019 Feb;53(2):211-216.

Inhibitor · Natural Compounds · Compound Libraries · Recombinant Proteins

This product is for Research Use Only · Not for Human or Veterinary or Therapeutic Use

Tel: 781-999-4286 E_mail: info@targetmol.com Address: 34 Washington Street, Wellesley Hills, MA 02481