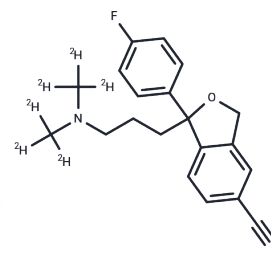


Citalopram-D6

Chemical Properties

CAS No. :	1190003-26-9
Formula:	C ₂₀ H ₁₅ D ₆ FN ₂ O
Molecular Weight:	330.43
Storage:	Powder: -20°C for 3 years In solvent: -80°C for 1 year Actual storage temperature shall be subject to the COA.



Biological Description

Description	Citalopram-D6 is a deuterated compound of Citalopram. Citalopram (T20828) has a CAS number of 59729-33-8. Citalopram (T20828) (Lu 10-171 is an orally active, selective serotonin reuptake inhibitor (SSRI), a selective 5-hydroxytryptamine reuptake inhibitor, and a racemic mixture of the S (+)-enantiomer (Escitalopram) and the R (-)-enantiomer. Citalopram exhibits antidepressant activity and enhances serotonergic neurotransmission. It can be used to study Alzheimer's disease.
-------------	---

Preparing Stock Solutions

	1mg	5mg	10mg
1 mM	3.0264 mL	15.1318 mL	30.2636 mL
5 mM	0.6053 mL	3.0264 mL	6.0527 mL
10 mM	0.3026 mL	1.5132 mL	3.0264 mL
50 mM	0.0605 mL	0.3026 mL	0.6053 mL

Please select the appropriate solvent to prepare the stock solution, according to the solubility of the product in different solvents. Please use it as soon as possible.

Note: The dilution table applies only to solid products. For liquid products, please calculate the stock solution based on the stated concentration and/or density.

Reference

- Carlsson B, et al. Enantioselective analysis of citalopram and escitalopram in postmortem blood together with genotyping for CYP2D6 and CYP2C19. J Anal Toxicol. 2009;33(2):65-76.

Inhibitor · Natural Compounds · Compound Libraries · Recombinant Proteins

This product is for Research Use Only · Not for Human or Veterinary or Therapeutic Use

Tel:781-999-4286 E_mail:info@targetmol.com Address:34 Washington Street,Wellesley Hills,MA 02481