

Binimetinib-13C-D3

Chemical Properties

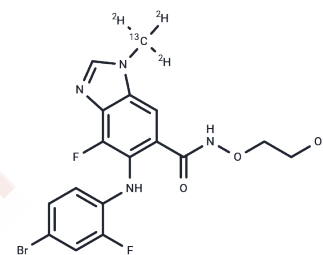
CAS No. :

Formula: C17H15BrF2N4O3

Molecular Weight: 445.24

Storage: Powder: -20°C for 3 years | In solvent: -80°C for 1 year

Actual storage temperature shall be subject to the COA.



Biological Description

Description	Binimetinib-13C-D3 is an isotopically labelled compound of Binimetinib for use as a tracer. Binimetinib (ARRY-162) is a selective MEK1/2 inhibitor for the treatment of melanoma.
Targets(IC50)	MEK, Autophagy

Preparing Stock Solutions

	1mg	5mg	10mg
1 mM	2.246 mL	11.2299 mL	22.4598 mL
5 mM	0.4492 mL	2.246 mL	4.492 mL
10 mM	0.2246 mL	1.123 mL	2.246 mL
50 mM	0.0449 mL	0.2246 mL	0.4492 mL

Please select the appropriate solvent to prepare the stock solution, according to the solubility of the product in different solvents. Please use it as soon as possible.

Note: The dilution table applies only to solid products. For liquid products, please calculate the stock solution based on the stated concentration and/or density.

Reference

Woodfield SE, et al. Binimetinib inhibits MEK and is effective against neuroblastoma tumor cells with low NF1 expression. BMC Cancer. 2016 Mar 1;16:172.

Yao W, et al. Enhancing therapeutic efficacy of the MEK inhibitor, MEK162, by blocking autophagy or inhibiting PI3K/Akt signaling in human lung cancer cells. Cancer Lett. 2015 Aug 1;364(1):70-8.

Inhibitor · Natural Compounds · Compound Libraries · Recombinant Proteins

This product is for Research Use Only · Not for Human or Veterinary or Therapeutic Use

Tel: 781-999-4286 E_mail: info@targetmol.com Address: 34 Washington Street, Wellesley Hills, MA 02481