

14,15 β -Dihydroxyklaineaneone

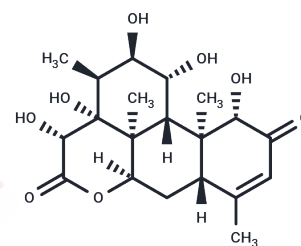
Chemical Properties

CAS No. : 137359-82-1

Formula: C₂₀H₂₈O₈

Molecular Weight: 396.43

Storage: Store at low temperature, Keep away from direct sunlight, Store under nitrogen
 Powder: -20°C for 3 years | In solvent: -80°C for 1 year
Actual storage temperature shall be subject to the COA.



Biological Description

Description	14,15 β -Dihydroxyklaineaneone (14,15beta-Dihydroxyklaineaneone) is a bittersweet compound isolated from <i>Eurycoma longifolia</i> with antitumor-promoting, antischistosomal and plasmodium-killing activities.
Targets(IC50)	Parasite
In vitro	Various concentrations of 14,15 β -dihydroxyklaineaneone (0, 2, 4, 8, 16, 32, and 64 μ M) were employed to treat HepG2 cells at different time points (24, 48, and 72 h). The results revealed that 14,15 β -dihydroxyklaineaneone significantly decreased proliferation in a dose and time-dependent manner compared with the control group[2].

Preparing Stock Solutions

	1mg	5mg	10mg
1 mM	2.5225 mL	12.6126 mL	25.2251 mL
5 mM	0.5045 mL	2.5225 mL	5.045 mL
10 mM	0.2523 mL	1.2613 mL	2.5225 mL
50 mM	0.0505 mL	0.2523 mL	0.5045 mL

Please select the appropriate solvent to prepare the stock solution, according to the solubility of the product in different solvents. Please use it as soon as possible.

Note: The dilution table applies only to solid products. For liquid products, please calculate the stock solution based on the stated concentration and/or density.

Reference

- Tung NH, et al. Quassinoids from the Root of *Eurycoma longifolia* and Their Antiproliferative Activity on Human Cancer Cell Lines. *Pharmacogn Mag.* 2017 Jul-Sep;13(51):459-462.
 Pei XD, et al. 14,15 β -dihydroxyklaineaneone inhibits HepG2 cell proliferation and migration through p38MAPK pathway. *J Pharm Pharmacol.* 2020 Sep;72(9):1165-1175.

Inhibitor · Natural Compounds · Compound Libraries · Recombinant Proteins

This product is for Research Use Only · Not for Human or Veterinary or Therapeutic Use

Tel:781-999-4286 E_mail:info@targetmol.com Address:34 Washington Street,Wellesley Hills,MA 02481