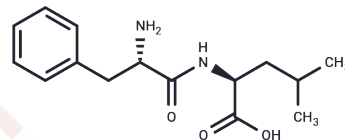


L-Phenylalanyl-L-leucine

Chemical Properties

CAS No. :	3303-55-7
Formula:	C ₁₅ H ₂₂ N ₂ O ₃
Molecular Weight:	278.35
Storage:	Keep away from moisture Powder: -20°C for 3 years In solvent: -80°C for 1 year <small>Actual storage temperature shall be subject to the COA.</small>



Biological Description

Description	L-Phenylalanyl-L-leucine is a leucine derivative applicable in biochemical experiments and drug synthesis studies.
Targets(IC50)	Amino Acids and Derivatives

Solubility Information

Solubility	DMSO: 2.8 mg/mL (10.06 mM), Sonication is recommended. (< 1 mg/ml refers to the product slightly soluble or insoluble)
------------	---

Preparing Stock Solutions

	1mg	5mg	10mg
1 mM	3.5926 mL	17.963 mL	35.926 mL
5 mM	0.7185 mL	3.5926 mL	7.1852 mL
10 mM	0.3593 mL	1.7963 mL	3.5926 mL
50 mM	0.0719 mL	0.3593 mL	0.7185 mL

Please select the appropriate solvent to prepare the stock solution, according to the solubility of the product in different solvents. Please use it as soon as possible.

Note: The dilution table applies only to solid products. For liquid products, please calculate the stock solution based on the stated concentration and/or density.

Reference

- Gómez-Tamayo JC, et al. Analysis of the interactions of sulfur-containing amino acids in membrane proteins. *Protein Sci.* 2016 Aug;25(8):1517-24.
- Andrade SS, et al. Baupain, a plant cysteine proteinase that hinders thrombin-induced human platelet aggregation. *Protein Pept Lett.* 2012 Apr;19(4):474-7.
- Luckose F, et al. Effects of amino acid derivatives on physical, mental, and physiological activities. *Crit Rev Food Sci Nutr.* 2015;55(13):1793-1144.
- Beaumont A, Roques BP. Presence of a histidine at the active site of the neutral endopeptidase-24.11. *Biochem Biophys Res Commun.* 1986 Sep 14;139(2):733-9. PubMed PMID: 3533067.

Inhibitor · Natural Compounds · Compound Libraries · Recombinant Proteins

This product is for Research Use Only · Not for Human or Veterinary or Therapeutic Use

Tel:781-999-4286 E_mail:info@targetmol.com Address:34 Washington Street,Wellesley Hills,MA 02481