

Eupatolide

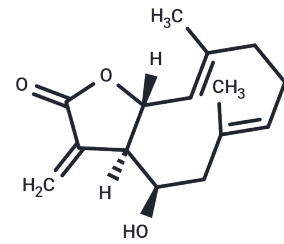
Chemical Properties

CAS No. : 6750-25-0

Formula: C₁₅H₂₀O₃

Molecular Weight: 248.32

Storage: Store at low temperature, Keep away from direct sunlight, Keep away from moisture
 Powder: -20°C for 3 years | In solvent: -80°C for 1 year
 Actual storage temperature shall be subject to the COA.



Biological Description

Description	Eupatolide is isolated from the flowers of <i>Inula japonica</i> with anti-inflammatory activity. Eupatolide can be used in studies about TRAIL resistance in breast cancer cells.
Targets(IC50)	NOS, NF-κB, MAPK, Akt, Nrf2, NO Synthase, Autophagy, COX, DNA/RNA Synthesis, PDGFR, Prostaglandin Receptor, ROS, TNF
In vitro	Eupatolide exhibits potent cytotoxicity against HL-60, SMMC-7721, A-549, MCF-7, and SW-480 cancer cell lines (IC ₅₀ : 1.57 to 22.58 μM). Eupatolide sensitizes breast cancer cells to TRAIL through the down-regulation of c-FLIP expression. In RAW264.7 cells, Eupatolide inhibits lipopolysaccharide-induced COX-2 and iNOS expression by inducing proteasomal degradation of TRAF6. Eupatolide suppresses PDGF-induced proliferation and migration of VSMC through HO-1 induction via ROS-Nrf2 pathway and may be a potential HO-1 inducer for preventing or treating vascular diseases[1].

Preparing Stock Solutions

	1mg	5mg	10mg
1 mM	4.0271 mL	20.1353 mL	40.2706 mL
5 mM	0.8054 mL	4.0271 mL	8.0541 mL
10 mM	0.4027 mL	2.0135 mL	4.0271 mL
50 mM	0.0805 mL	0.4027 mL	0.8054 mL

Please select the appropriate solvent to prepare the stock solution, according to the solubility of the product in different solvents. Please use it as soon as possible.

Note: The dilution table applies only to solid products. For liquid products, please calculate the stock solution based on the stated concentration and/or density.

Reference

Wu XD, et al. Bioactive sesquiterpenoids from the flowers of *Inula japonica*. *Phytochemistry*. 2016 Sep;129:68-76.
Lee J, et al. Eupatolide inhibits lipopolysaccharide-induced COX-2 and iNOS expression in RAW264.7 cells by inducing proteasomal degradation of TRAF6. *Eur J Pharmacol*. 2010 Jun 25;636(1-3):173-80.

Inhibitor · Natural Compounds · Compound Libraries · Recombinant Proteins

This product is for Research Use Only · Not for Human or Veterinary or Therapeutic Use

Tel:781-999-4286 E_mail:info@targetmol.com Address:34 Washington Street,Wellesley Hills,MA 02481